



# INSTALLATION INSTRUCTIONS

Accessory

RIDER FOOTPEGS  
P/N 08U69-MFY-100

Application

VT1300CR/CS/CT

Publications No.

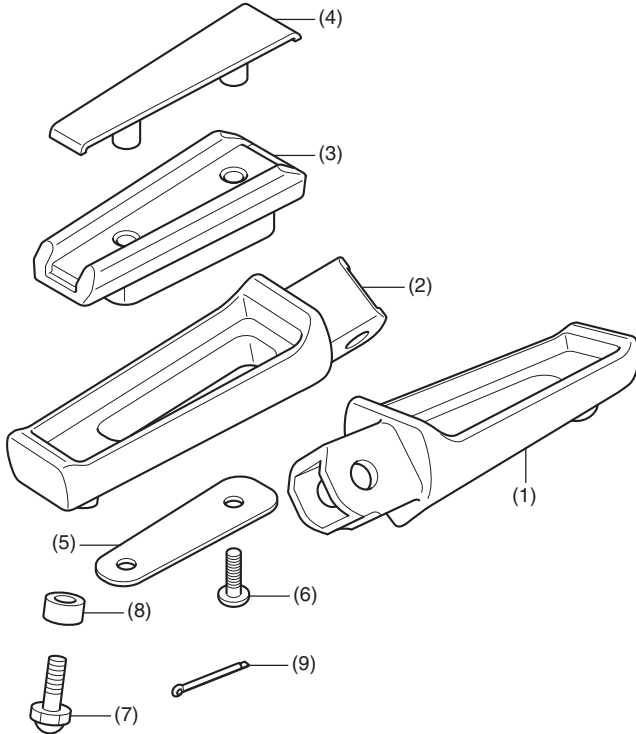
MII 13073

Issue Date

February 2010

Honda Dealer: Please give a copy of these instructions to your customer.

## PARTS LIST



No.	Description	Qty
(1)	Right footpeg arm	1
(2)	Left footpeg arm	1
(3)	Footpeg rubber	2
(4)	Footpeg rubber upper plate	2
(5)	Footpeg rubber lower plate	2
(6)	5 mm socket bolt	4
(7)	6 mm cap bolt	2
(8)	Collar	2
(9)	Split pin	2

## TOOLS REQUIRED

Hex wrench (3 mm)      Open-end wrench (10 mm)  
 Grease                      Long nose pliers  
 Isopropyl alcohol        Shop towel  
 Torque wrench

## USE AND CARE INFORMATION

- Check the accessory mounts frequently and retighten if necessary.

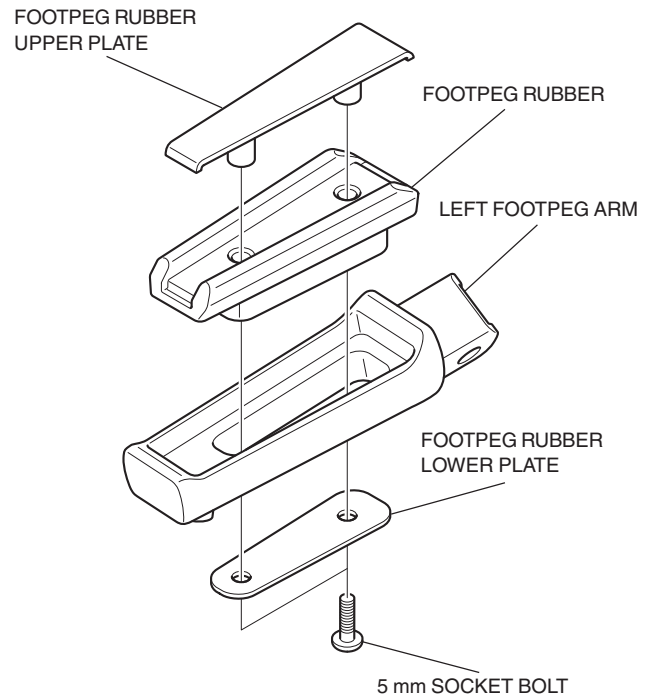
## TORQUE CHART

Tighten all screws, bolts, and nuts to their specified torque values. Refer to the Service Manual for the torque values of the removed parts.

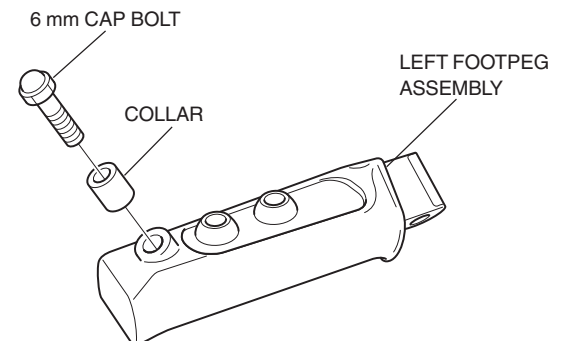
Item	N-m	kgf-m	lbf-ft
5 mm socket bolt	5.2	0.5	3.8
6 mm cap bolt	10	1.0	7

## INSTALLATION

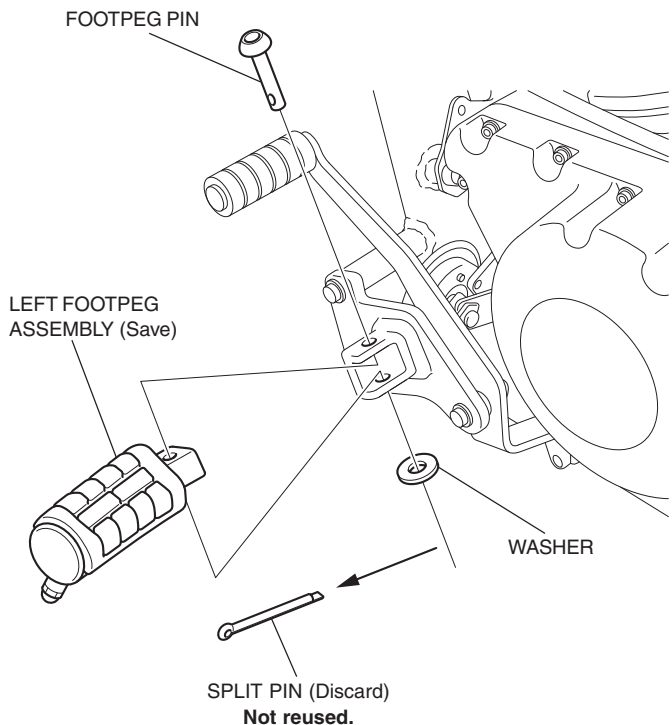
1. Assemble the left and right footpegs as shown.



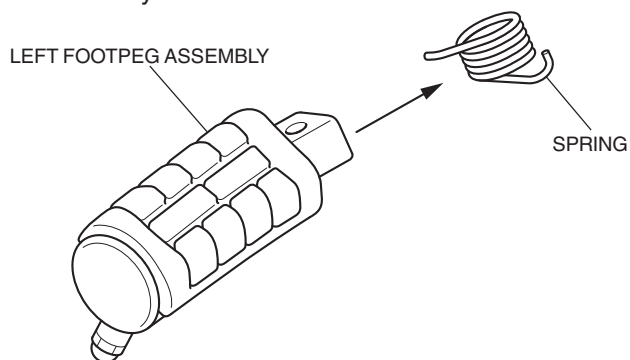
2. Install the 6 mm cap bolt as shown and tighten it to the specification in the torque table.



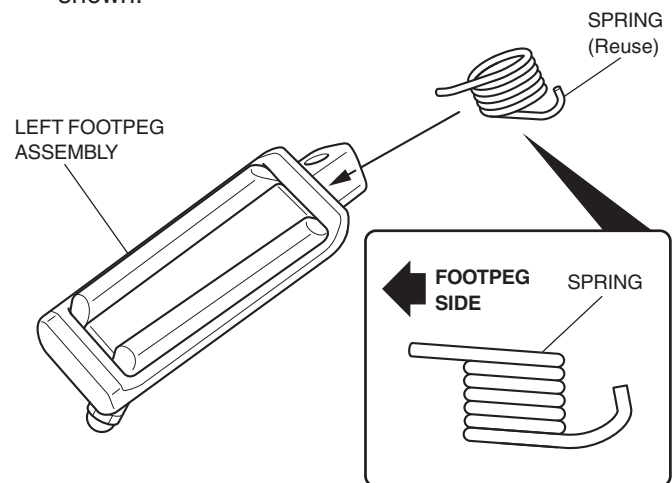
- Remove the original equipment left footpeg assembly as shown.



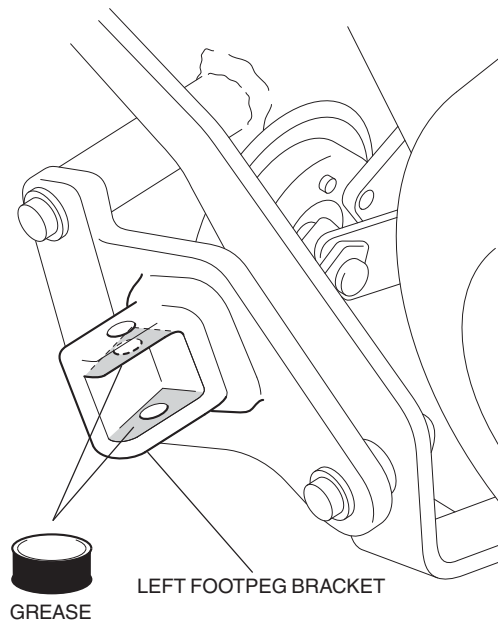
- Remove the spring as shown from the left footpeg assembly.



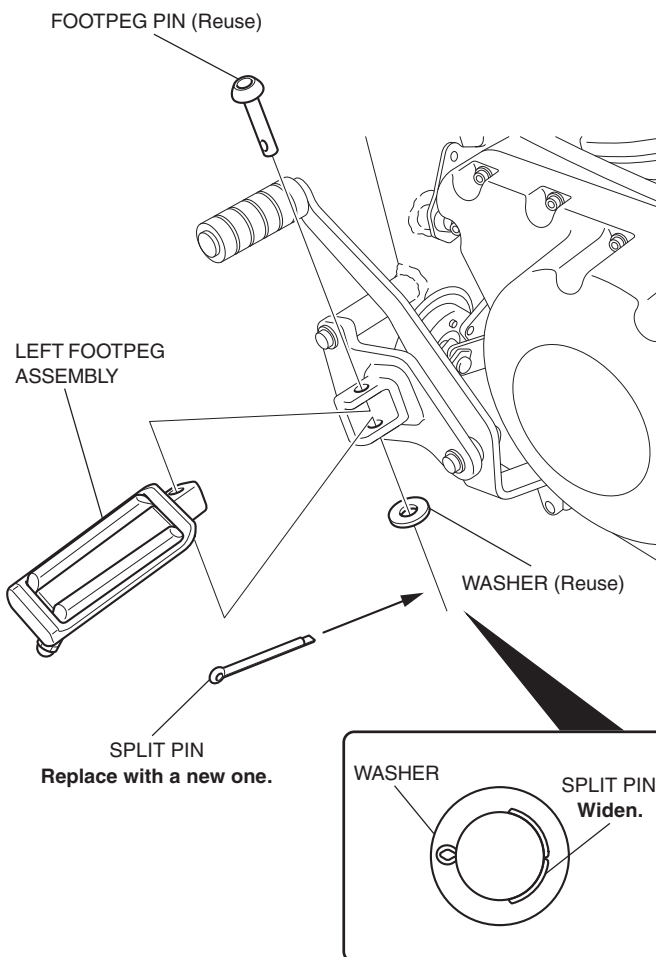
- Install the spring to the new left footpeg assembly as shown.



- Apply grease to the position shown.
  - Clean the mounting positions before application.



- Install the new left footpeg assembly as shown.



- Repeat on the right side.