



# HONDA

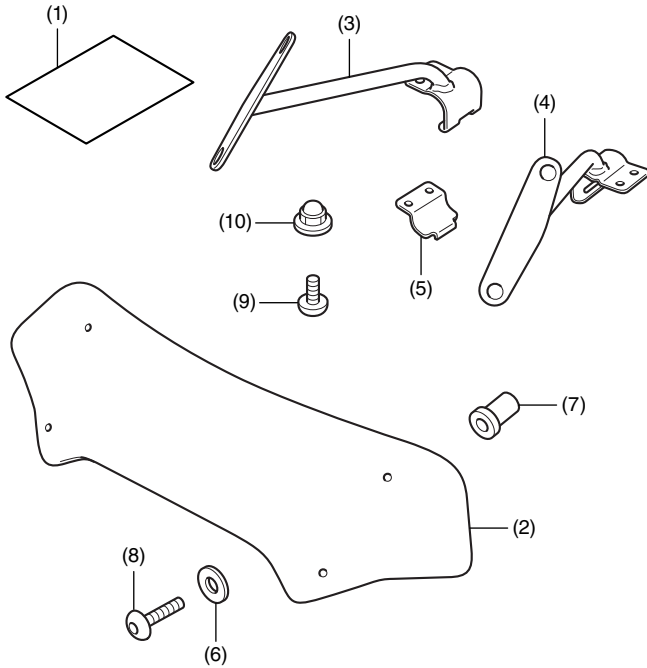
## INSTALLATION INSTRUCTIONS

Accessory  
**BOULEVARD SCREEN**  
 P/N 08R70-MJR-670

Application  
**GL1800C**

Publication No.  
**MII 14918**  
 Issue Date  
**March 2014**

### PARTS LIST



No.	Description	Qty
(1)	Installation Instructions URL	1
(2)	Windscreen	1
(3)	Right windscreen stay	1
(4)	Left windscreen stay	1
(5)	Windscreen lower holder	2
(6)	Washer	4
(7)	Well nut	4
(8)	6 mm screw	4
(9)	6 mm bolt	4
(10)	6 mm cap nut	4

### TOOLS AND SUPPLY REQUIRED

Box-end wrench (10 mm)  
 Open-end wrench (10 mm)  
 Hex wrench (5 mm)  
 Scale  
 Torque wrench

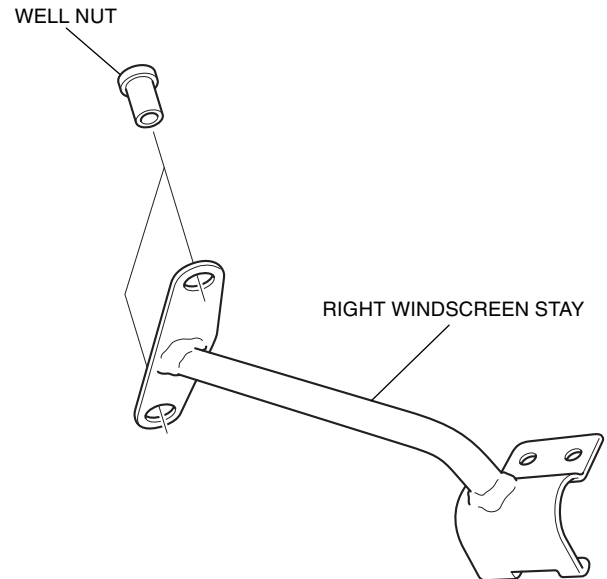
### TORQUE CHART

Tighten all screws, bolts, and nuts to their specified torque values. Refer to the Service Manual for the torque values of the removed parts.

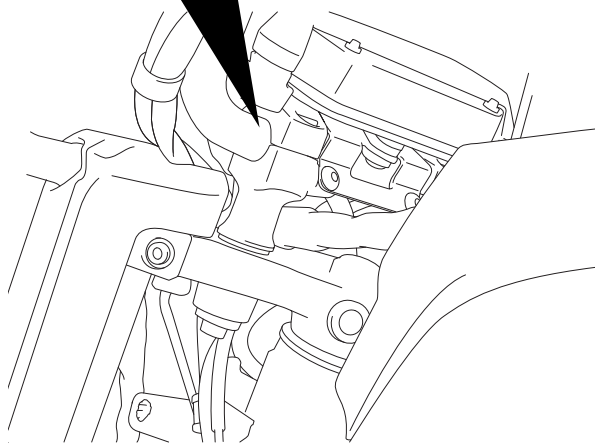
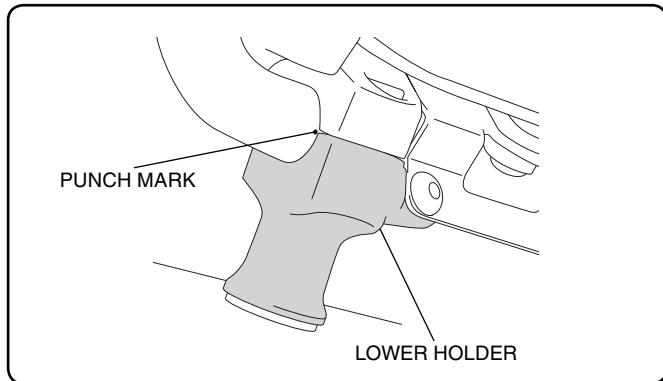
Item	N·m	kgf·m	lbf·ft
6 mm screw	0.9	0.09	0.7
6 mm cap nut	12	1.2	9

### INSTALLATION

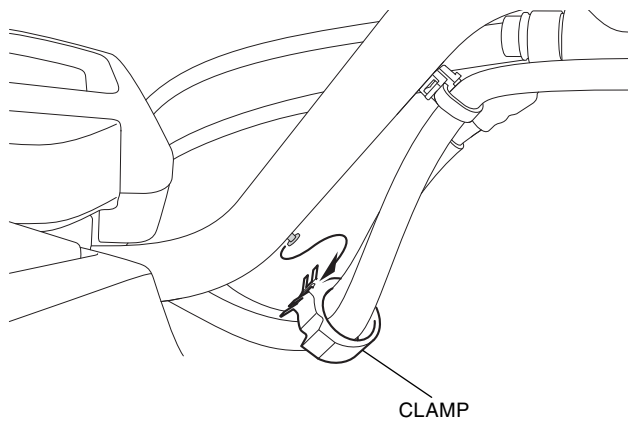
1. Install the well nuts to the right windscreen stay as shown.



2. Check the alignment of the punch mark and the lower holder as shown. If the punch mark is not aligned with the top edge of the lower holder, correct the position of the handlebar.

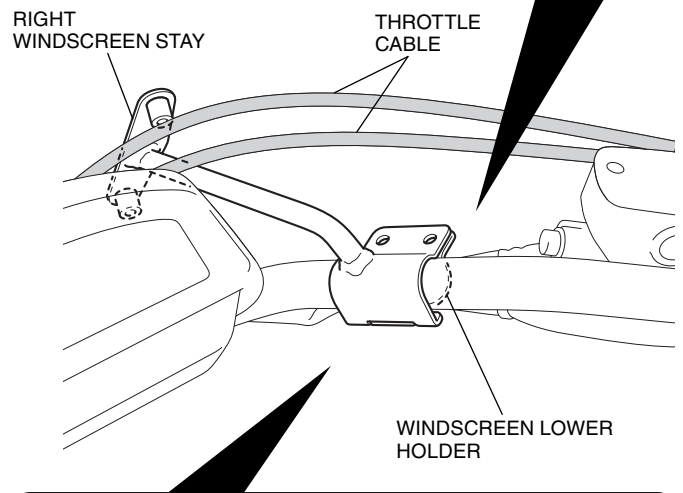
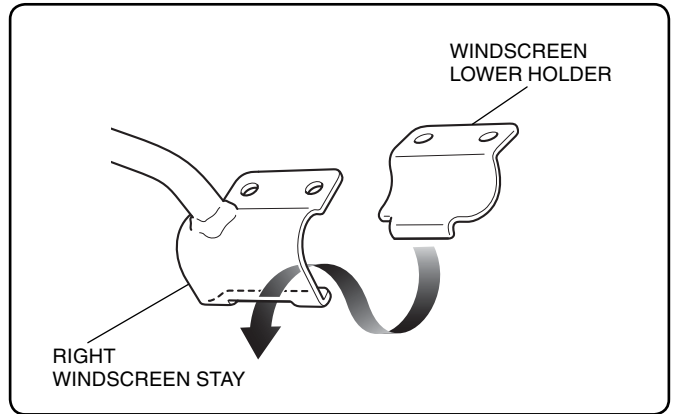


3. Remove the indicated clamp.  
<Right side>

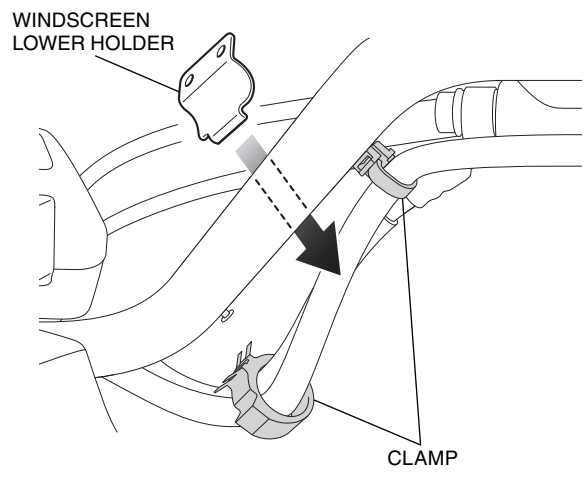


4. Loosely install the right windscreen stay and windscreen lower holder as shown.

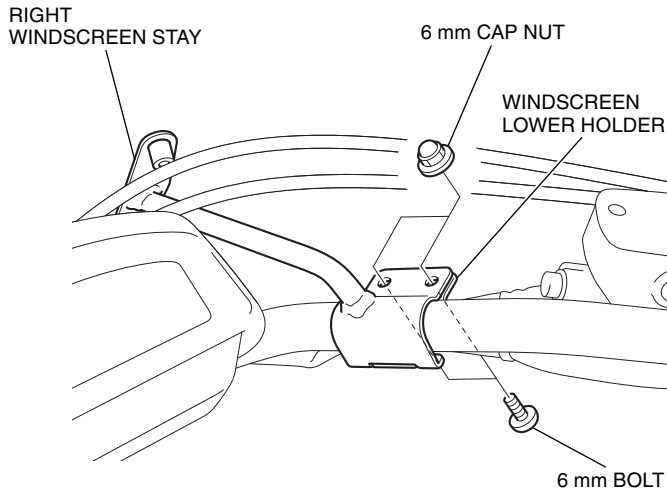
<Right side>



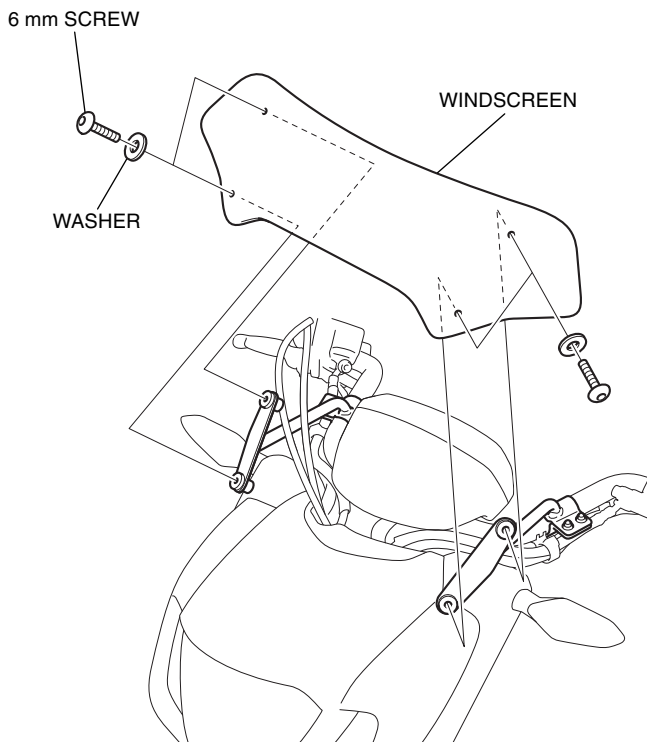
Pass the windscreen lower holder between the clamps as shown.



5. Loosely install the 6 mm bolt and 6 mm cap nut as shown.



6. Reinstall the removed clamp.  
7. Repeat Step 1 through 6 on the left side.  
8. Loosely install the windscreen as shown.



9. Align the windscreen assembly in accordance with the dimensions shown and check that the windscreen is positioned equally on both sides, then tighten the screws, bolts, and nuts to the specifications in the Torque Chart.

<Right side>

- When installing the windscreen, tighten the upper 6 mm screw securely first.
- Repeat on the left side.
- Turn the handlebar to the left and right and confirm that the windscreen does not interfere with the throttle cables.

