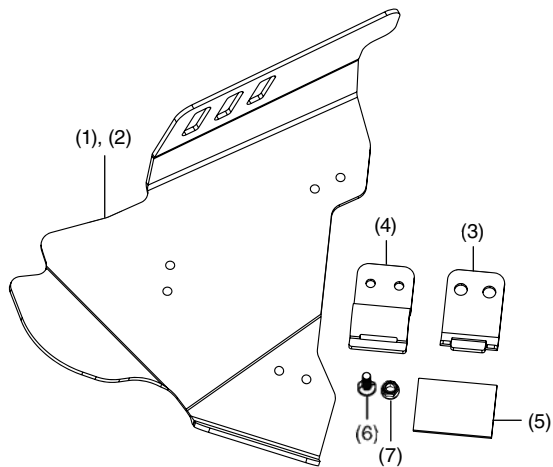


# HONDA

## INSTALLATION INSTRUCTIONS

Accessory	Application	Publication No.
FRONT A-ARM GUARD P/N 08P71-HR6-A60	After '13 TRX500 (All except TRX500FA/FPA)	MII 15066
		Issue Date
		September 2014

### PARTS LIST



No.	Description	Qty
(1)	Front right arm guard	1
(2)	Front left arm guard	1
(3)	Tabbed bracket	6
(4)	Slotted bracket	6
(5)	Rubber strip	2
(6)	6 x 20 mm flat screw	12
(7)	6 mm U-nut	12

### TOOLS AND SUPPLIES REQUIRED

Torque wrench  
10 mm socket  
Phillips screwdriver

### TORQUE CHART

Tighten all screws, bolts, and nuts to their specified torque values. Refer to the Service Manual for the torque values of the removed parts.

Item	N·m	kgf·m	lbf·ft
6 mm U nut	10	1	7

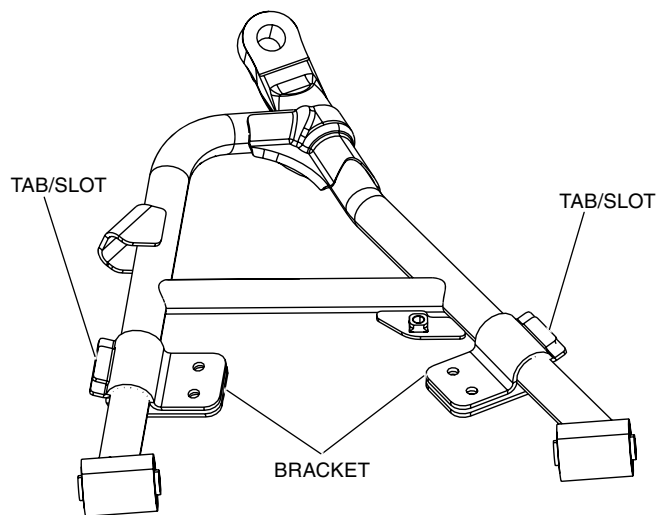
### USE AND CARE INFORMATION

Check the accessory mounts frequently and retighten if necessary.

### INSTALLATION

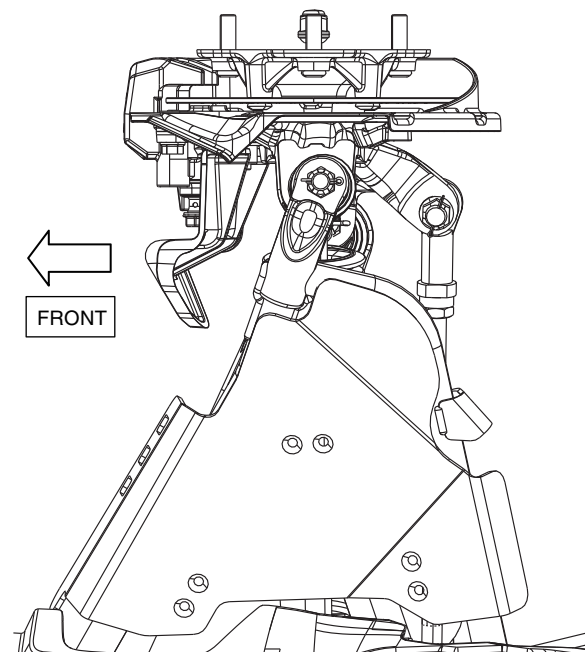
- Assemble the brackets by inserting the tab of the tabbed bracket through the slot in the slotted bracket. Place the assembled brackets around the left A-arm tubes as shown.

<LEFT A-ARM, TOP VIEW>

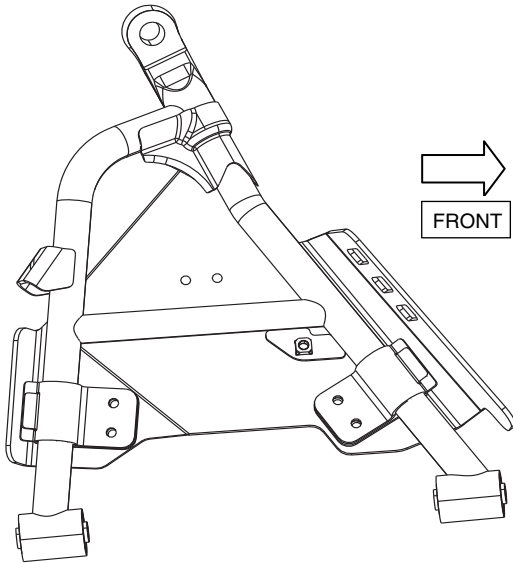


- Place the A-arm guard along front left A-Arm as shown.

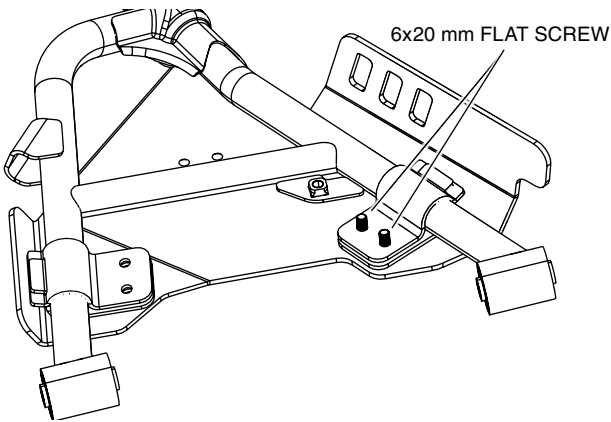
<VIEW FROM BOTTOM>



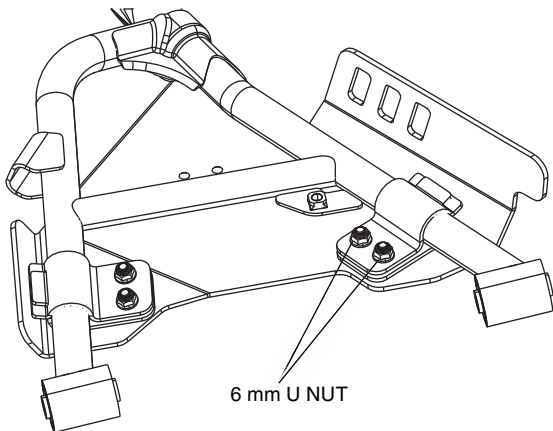
<TOP VIEW>



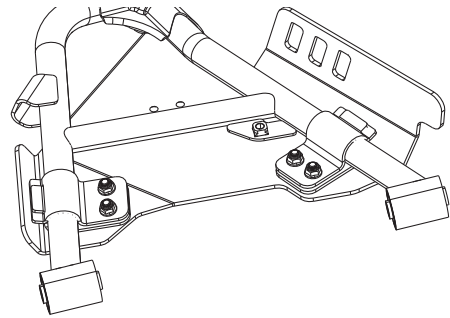
3. Pass two screws through the countersunk holes in the guard and assembled bracket as shown.



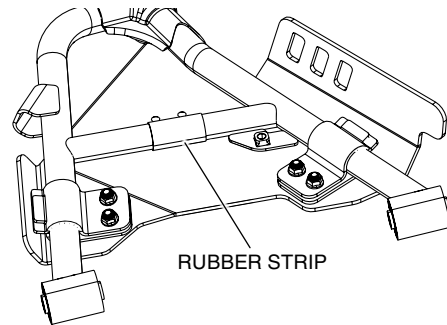
4. Thread a U-nut onto each screw and tighten until the bracket loosely contacts the guard.



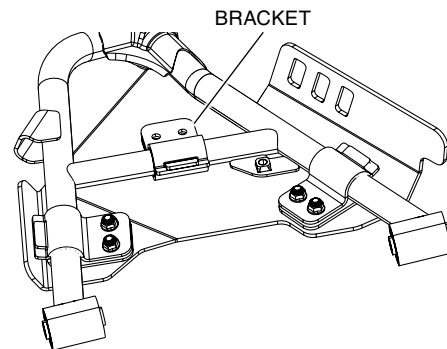
5. Repeat Steps 3 and 4 for the opposite Bracket.



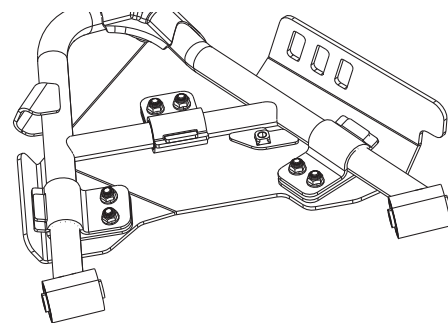
6. Wrap the rubber strip around the cross member as shown.



7. Assemble the bracket over the rubber strip as shown.



8. Repeat Steps 3 and 4 for the final bracket.



9. Once all brackets are loosely attached, tighten all hardware to the value specified in the Torque Chart.

10. Repeat Steps 1 thru 9 for installing the guard on the right A-arm.