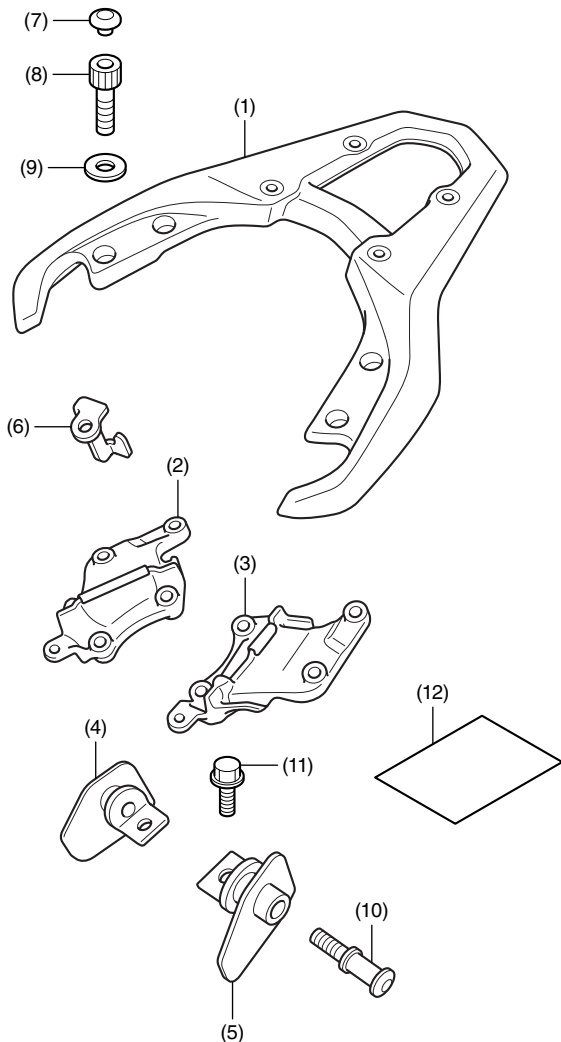


Accessory	Application	Publication No.
REAR CARRIER P/N 08L71-MGZ-A80ZA	CB500X/XA	MII 14565
		Issue Date
		May 2013

PARTS LIST



No.	Description	Qty
(1)	Rear carrier	1
(2)	Right carrier stay	1
(3)	Left carrier stay	1
(4)	Right hook stay	1
(5)	Left hook stay	1
(6)	Helmet hook	1
(7)	Cap	4
(8)	8 mm socket bolt	4
(9)	Washer	4
(10)	8 mm hook bolt	2
(11)	6 mm flange bolt	2
(12)	Installation Instruction URL	1

TOOLS REQUIRED

- Sockets (10 and 12 mm)
- Ratchet
- Hex wrench (5 and 6 mm)
- Torque wrench

TORQUE CHART

Tighten all screws, bolts, and nuts to their specified torque values. Refer to the Service Manual for the torque values of the removed parts.

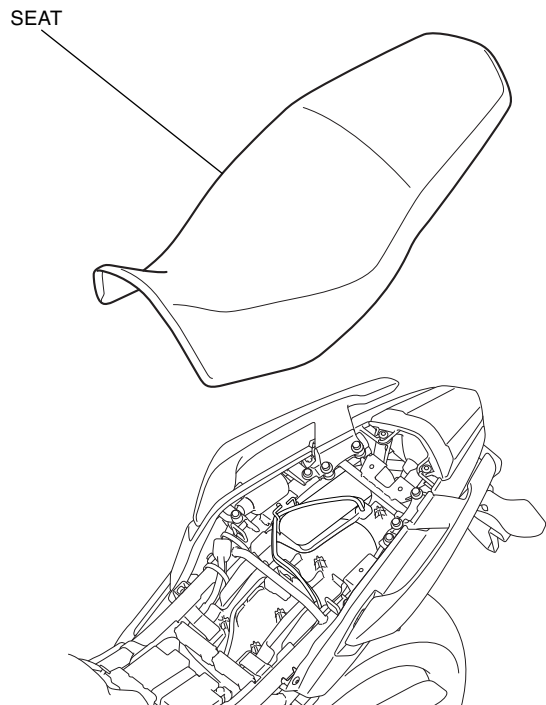
Item	N·m	kgf·m	lbf·ft
6 mm flange bolt	12	1.2	9
8 mm socket bolt	22	2.2	16
8 mm hook bolt	22	2.2	16

INSTALLATION

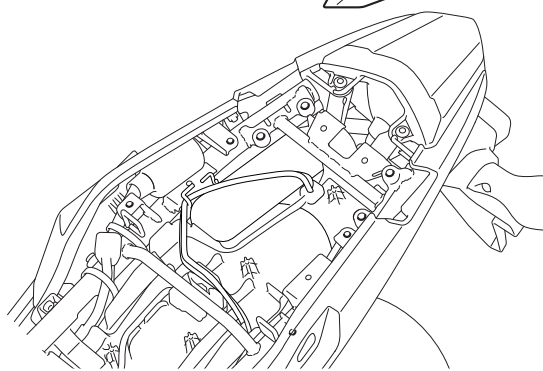
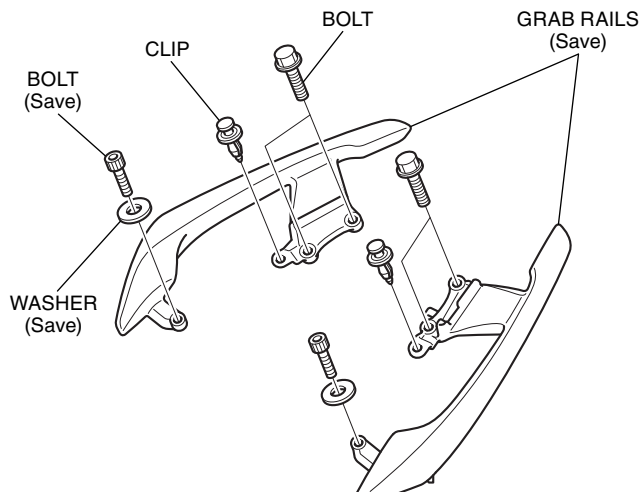
NOTE:

- Take care not to damage the painted surfaces of the motorcycle.
- Reinstall the removed parts on the motorcycle and make sure that wires and harnesses are not pinched.

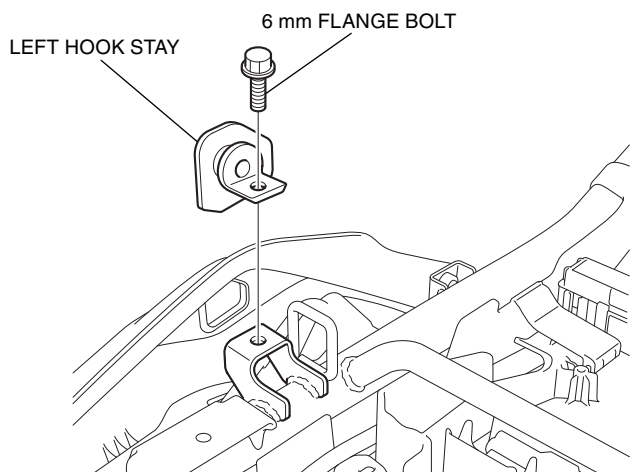
- Refer to the Service Manual for the motorcycle, remove the seat.



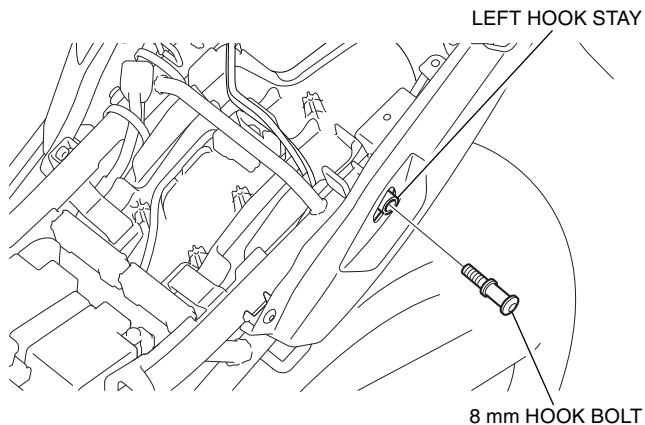
- Refer to the Service Manual for the motorcycle, remove the grab rails.
 - Repeat on the right side.



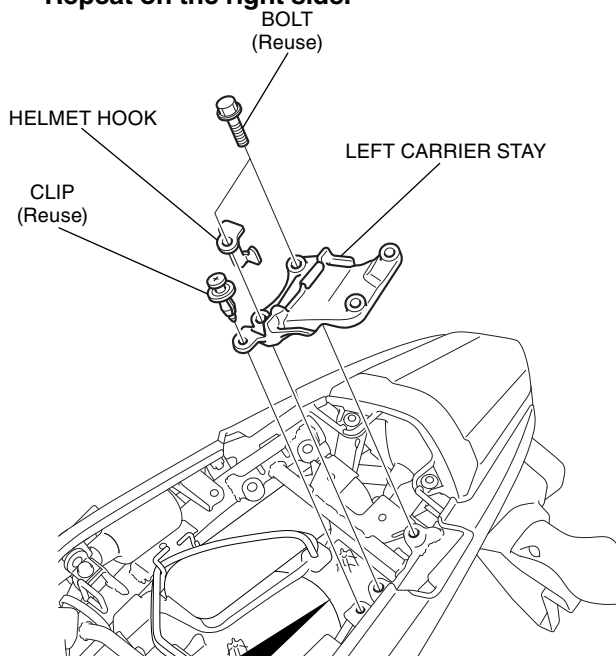
- Install the left and right hook stays as shown.
 - Repeat on the right side.



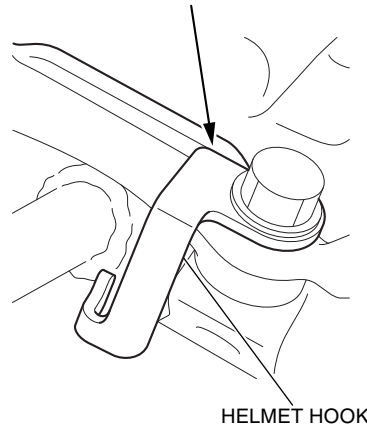
- Install the 8 mm hook bolts as shown.
 - Repeat on the right side.



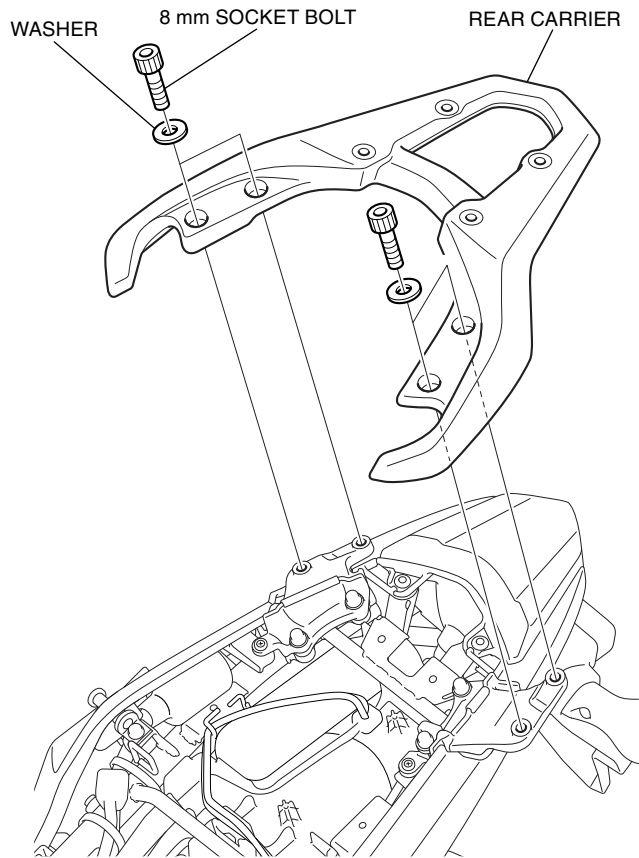
- Loosely install the left and right carrier stays as shown.
 - Repeat on the right side.



Rotate the helmet hook until it makes contact.

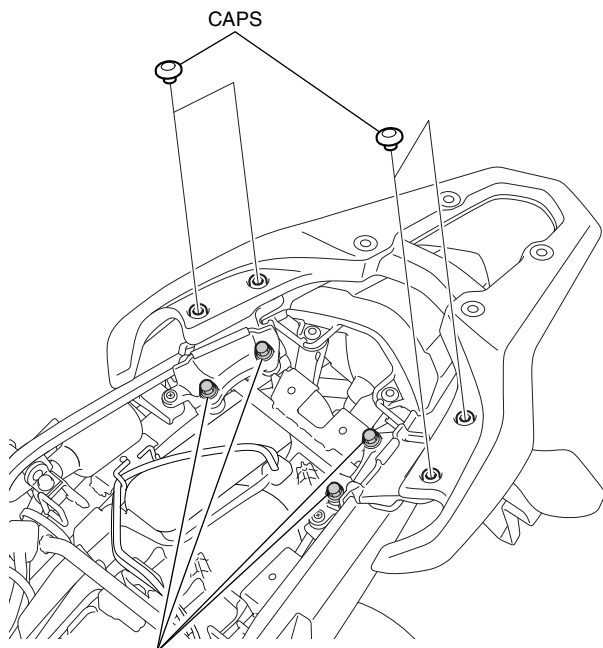


6. Install the rear carrier as shown.



7. Install the caps as shown.

- **Tighten all loosely installed hardware to the specification.**



BOLTS (Reuse)
TORQUE: 31 N·m (3.2 kgf·m, 23 lbt·ft)

8. Install the motorcycle's parts in the reverse order of removal.