



HONDA

INSTALLATION INSTRUCTIONS

Accessory

SADDLEBAG STAY
P/N 08L73-MJF-A00ZP

Application

CTX700N/ND (Pages 1-6)
CTX700/D (Pages 6-11)

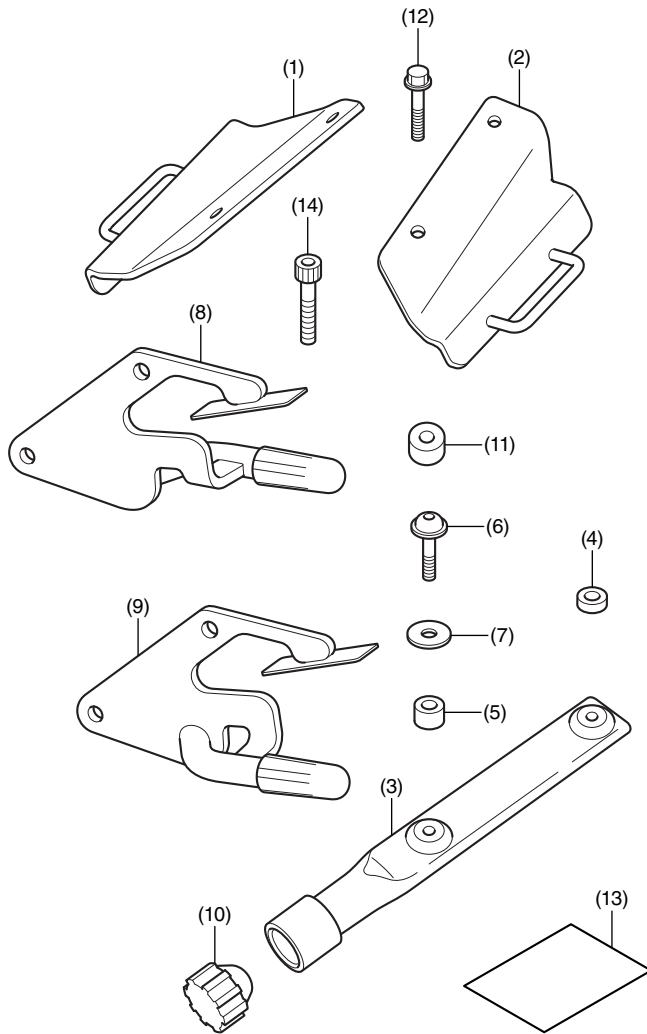
Publication No.

MII 14476

Issue Date

March 2013

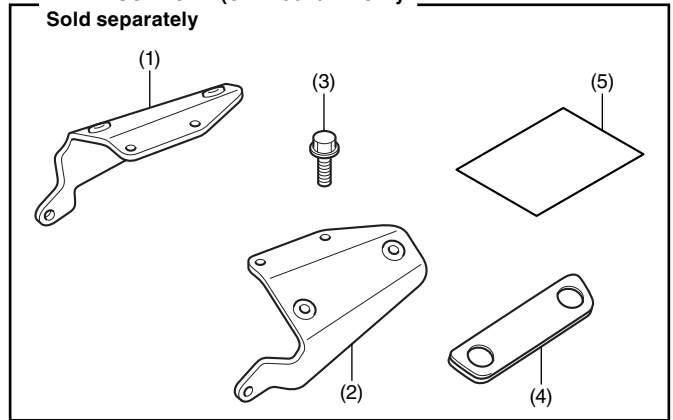
PARTS LIST



No.	Description	Qty
(1)	Right saddlebag hook	1
(2)	Left saddlebag hook	1
(3)	Saddlebag bracket	2
(4)	Collar (small-thin)	2
(5)	Collar (small-thick)	2
(6)	6 mm socket bolt	4
(7)	Washer	4
(8)	Right saddlebag support stay	1
(9)	Left saddlebag support stay	1
(10)	Rubber stop	2
(11)	Collar (large)	4
(12)	8 mm flange bolt	4
(13)	Installation Instruction URL	1
(14)	8 mm socket bolt (Not used.)	4

INNER SUPPORT (CTX700N/ND Only)

Sold separately



No.	Description	Qty
(1)	Right inner support stay	1
(2)	Left inner support stay	1
(3)	8 mm flange bolt	6
(4)	Cushion	2
(5)	Installation Instruction URL	1

TOOLS REQUIRED

- Socket (12 mm)
- Ratchet
- Hex wrench (4 and 6 mm)
- Ruler
- Torque wrench

TORQUE CHART

Tighten all screws, bolts, and nuts to their specified torque values. Refer to the Service Manual for the torque values of the removed parts.

Item	N-m	kgf-m	lbf-ft
6 mm socket bolt	10	1.0	7
8 mm socket bolt	22	2.2	16
8 mm flange bolt	27	2.8	20

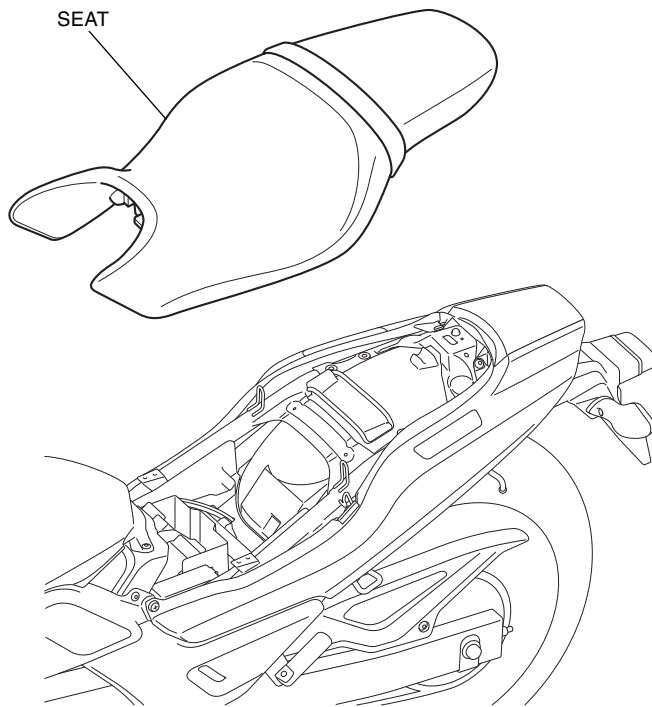
INSTALLATION (CTX700N/ND)

▲ CAUTION

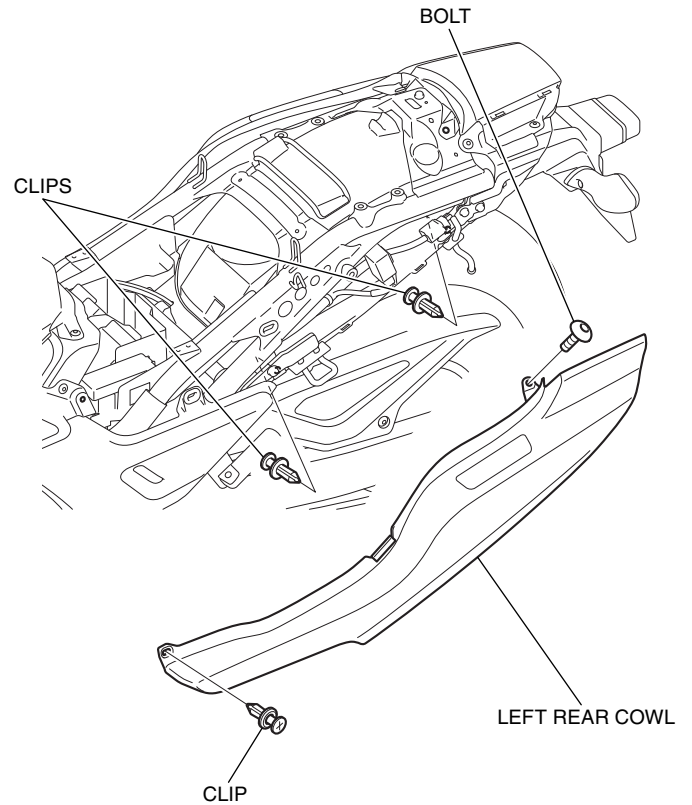
- To prevent burns, allow the engine, exhaust system, radiator, etc. to cool before installing the accessory.

NOTE:

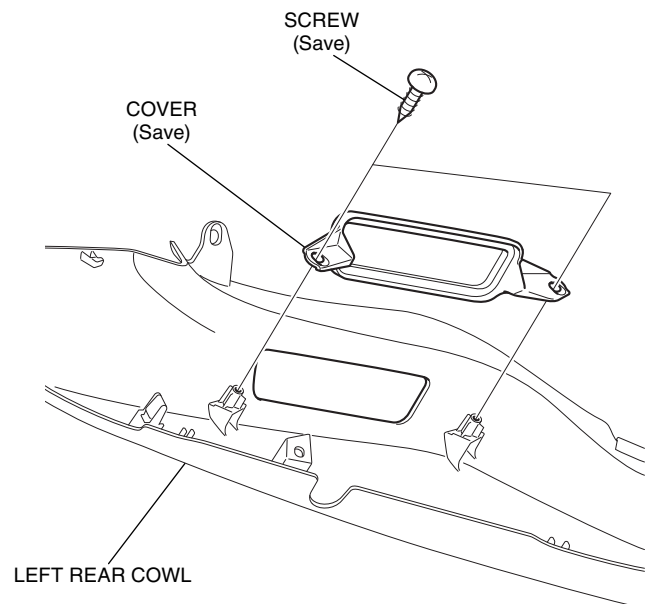
- Take care not to damage the painted surfaces of the motorcycle.
 - Illustrations show CTX700N type, CTX700ND type is similar.
1. Refer to the Service Manual for the motorcycle, remove the seat.



2. Refer to the Service Manual for the motorcycle, remove the rear cowls.
 - Repeat on the right side.

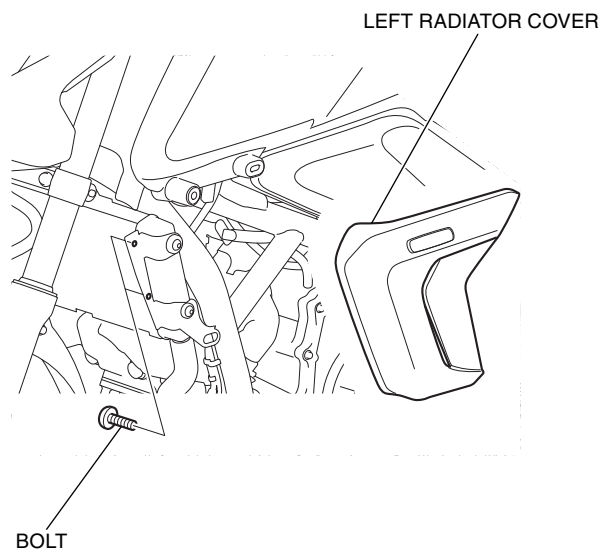


3. Refer to the Service Manual for the motorcycle, remove the covers from the inside of the rear cowls.
 - Repeat on the right side.



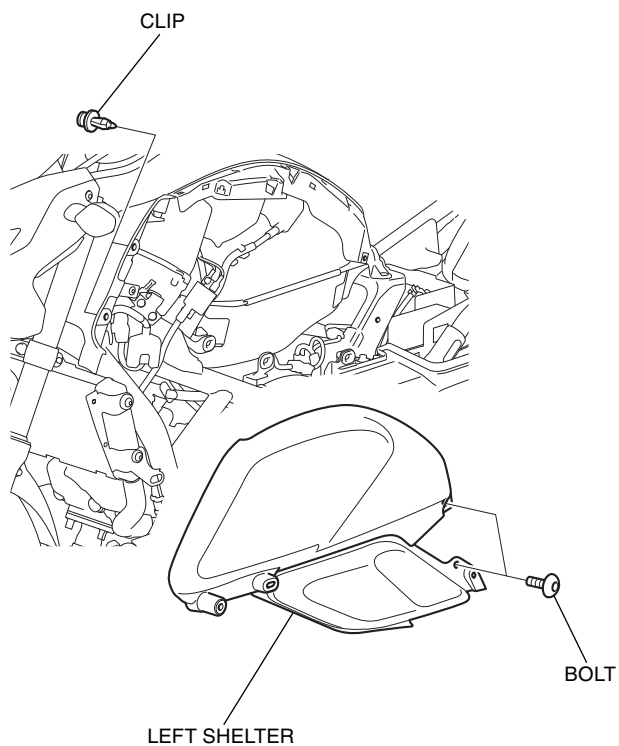
4. Refer to the Service Manual for the motorcycle, remove the radiator covers.

- Repeat on the right side.

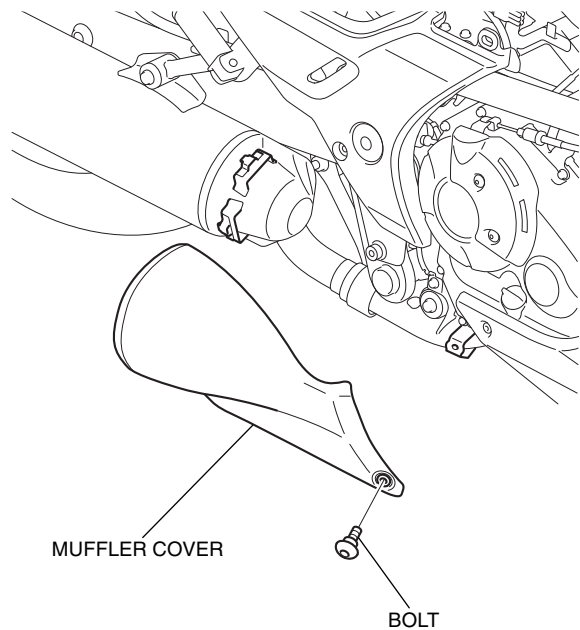


5. Refer to the Service Manual for the motorcycle, remove the shelters.

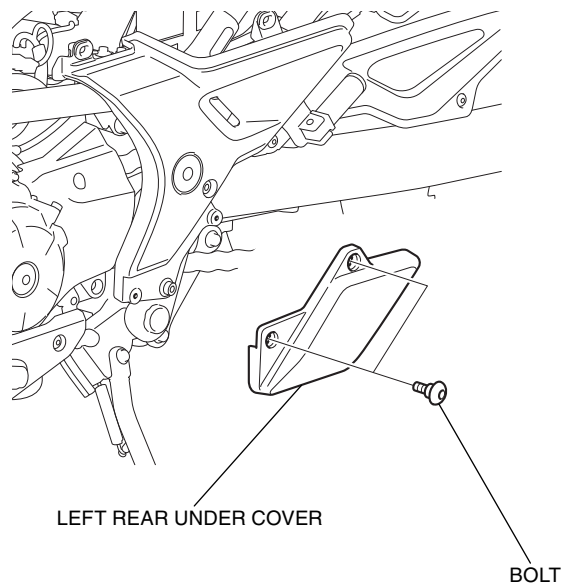
- Repeat on the right side.



6. Refer to the Service Manual for the motorcycle, remove the muffler cover.

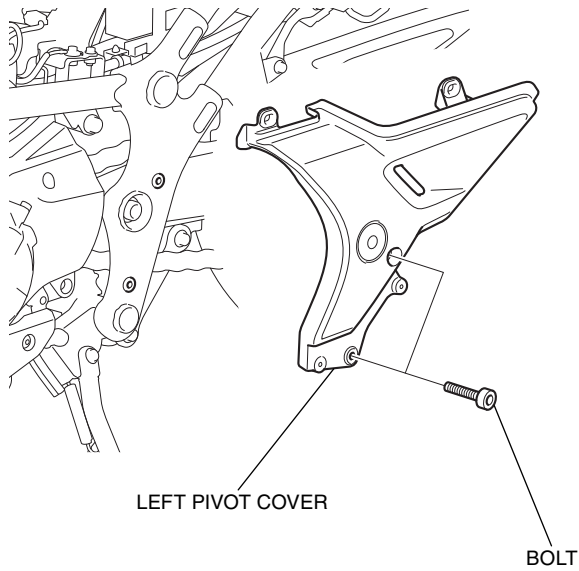


7. Refer to the Service Manual for the motorcycle, remove the left rear under cover.



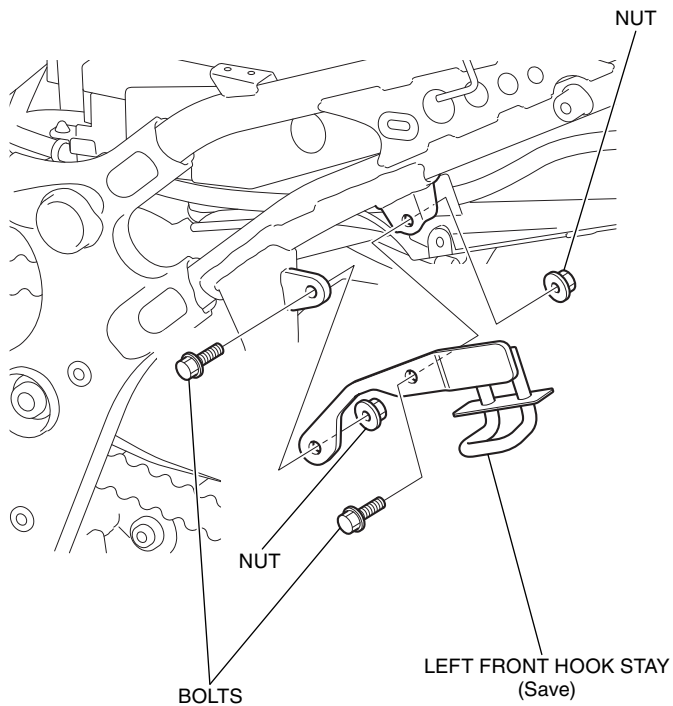
8. Refer to the Service Manual for the motorcycle, remove the pivot covers.

- Repeat on the right side.



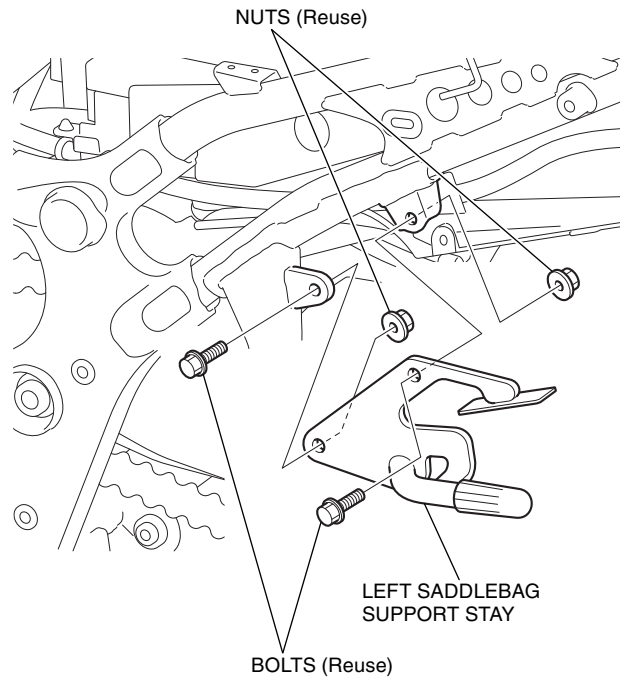
9. Refer to the Service Manual for the motorcycle, remove the front hook stays.

- Repeat on the right side.



10. Install the saddlebag support stays as shown.

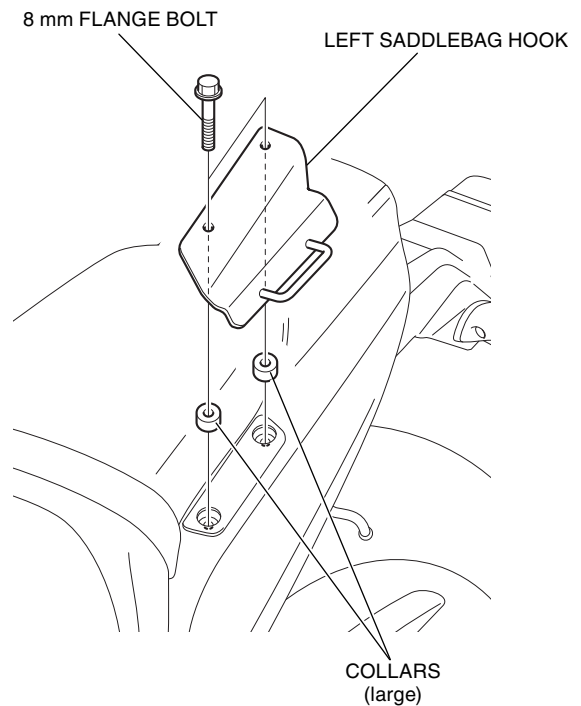
- Repeat on the right side.



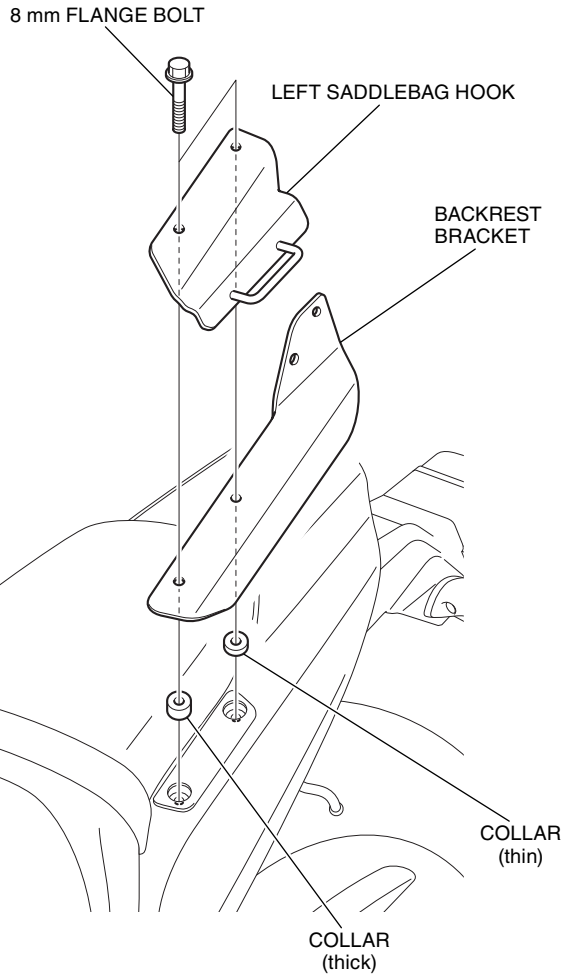
11. Refer to the Installation Instructions for the separately sold inner support, install the inner support to the motorcycle.

12. Loosely install the saddlebag hooks as shown.

- Repeat on the right side.

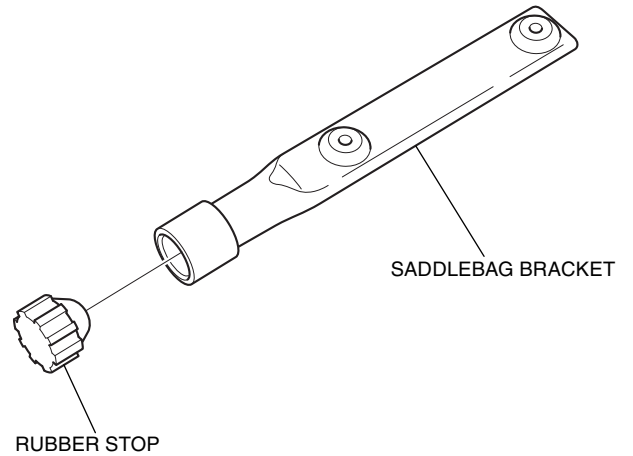
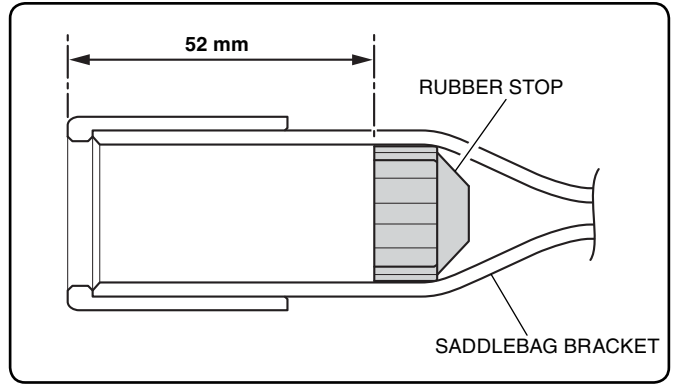


When installing the Backrest bracket
(Sold separately)



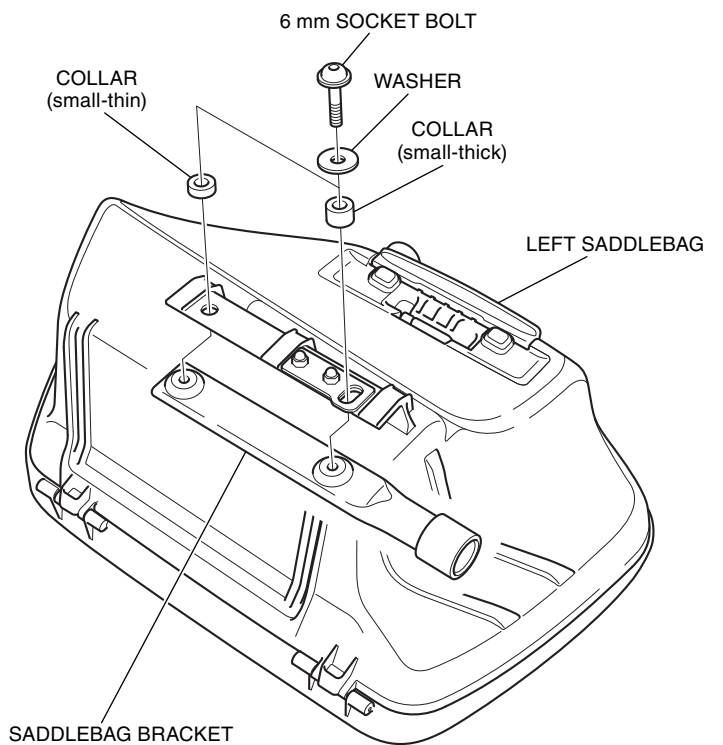
13. Install the rubber stop as shown.

- **Make two sets.**



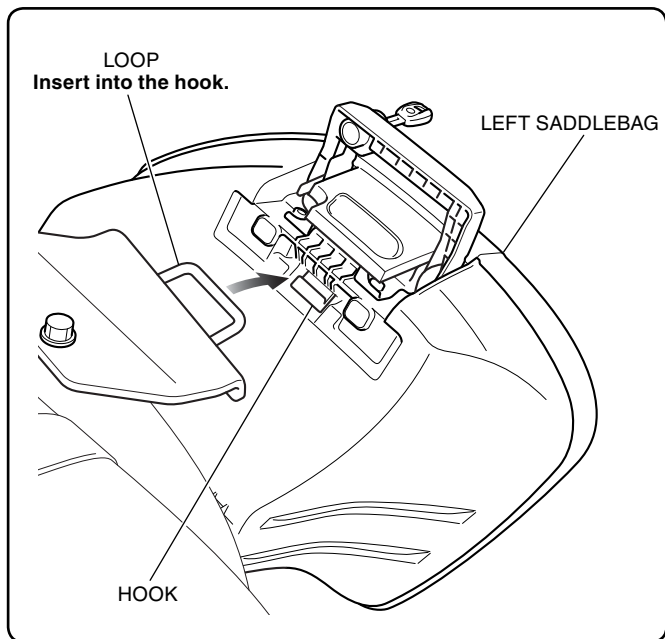
14. Install the saddlebag bracket as shown.

- **Repeat on the right side.**

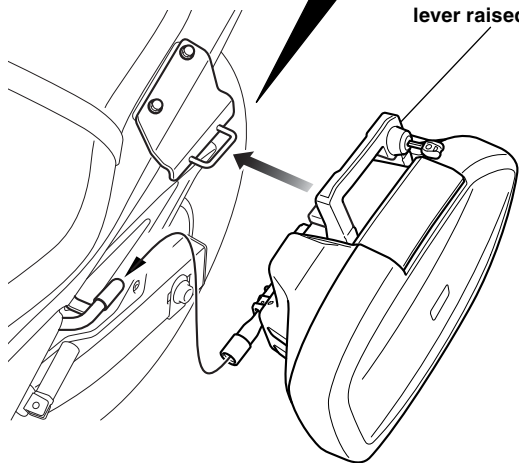


15. Install saddlebags as shown.

- Repeat on the right side.

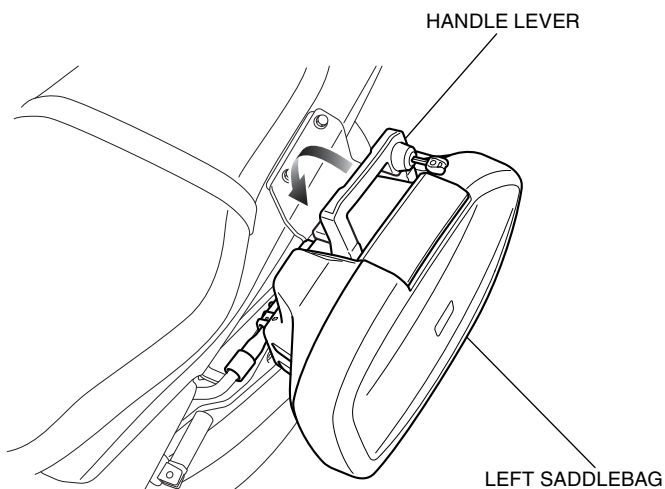


HANDLE LEVER
Install the saddlebag case with the handle lever raised.



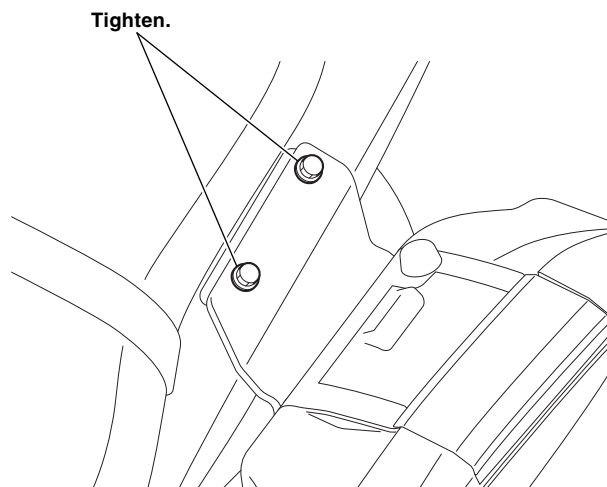
16. Lower the handle lever as shown.

- Repeat on the right side.



17. Tighten all loosely installed hardware to the specifications in the torque chart.

- The right side is same.



INSTALLATION (CTX700/D)

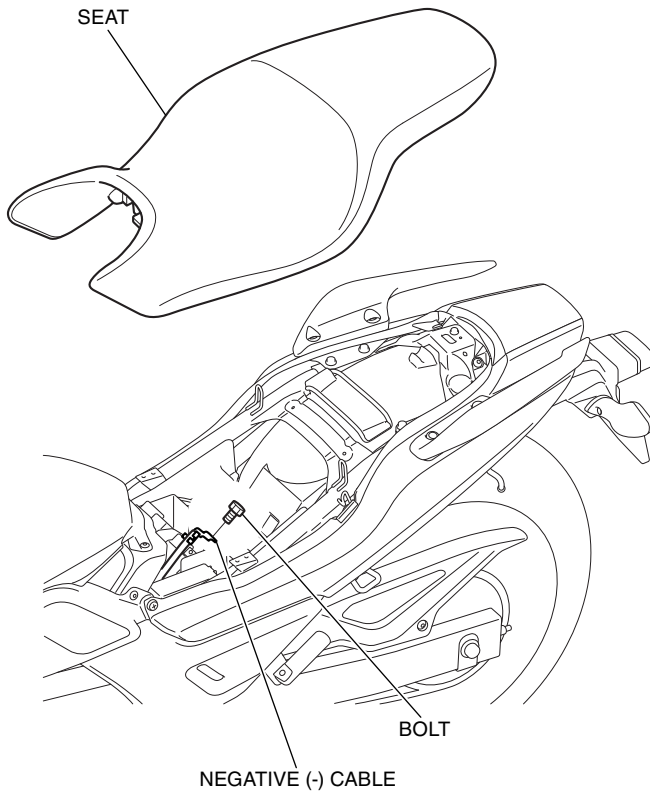
▲ CAUTION

- To prevent burns, allow the engine, exhaust system, radiator, etc. to cool before installing the accessory.

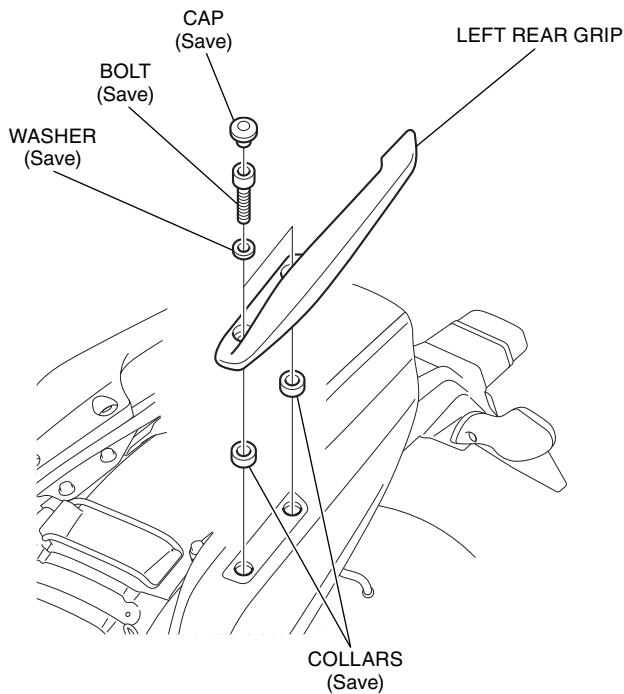
NOTE:

- Take care not to damage the painted surfaces of the motorcycle.
- Reinstall the removed parts on the motorcycle and make sure that wires and harnesses are not pinched.
- Disconnect the negative (-) cable from the battery before installing this accessory.
- The memory of the clock will be erased when you disconnect the battery. Reset the clock after reconnecting the battery.
- Illustrations show CTX700 type, CTX700D type is similar.

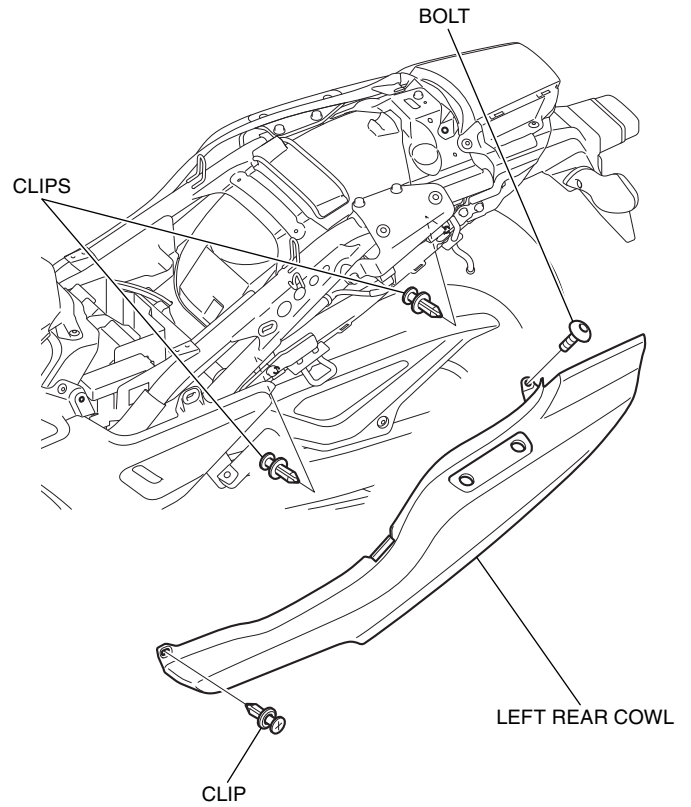
1. Refer to the Service Manual for the motorcycle, remove the seat, and disconnect the negative (-) cable from the battery as shown.



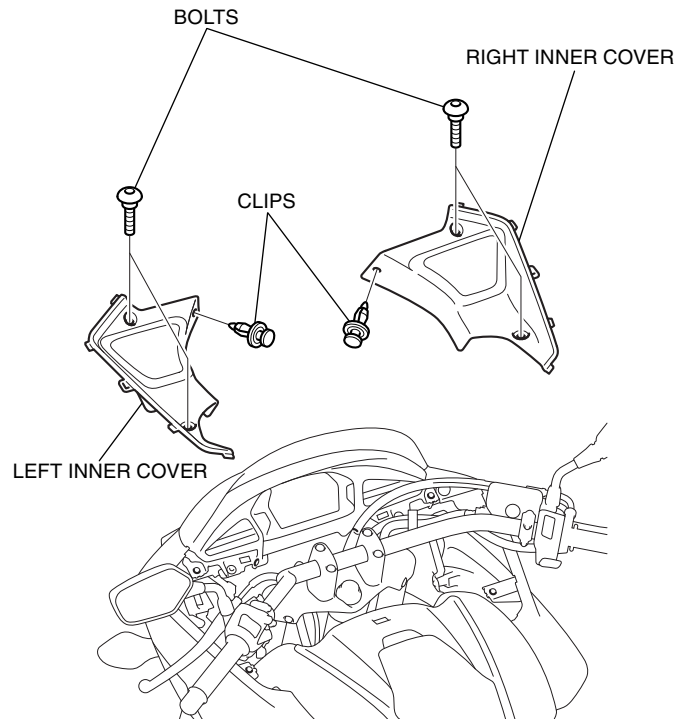
2. Refer to the Service Manual for the motorcycle, remove the rear grips.
 - Repeat on the right side.



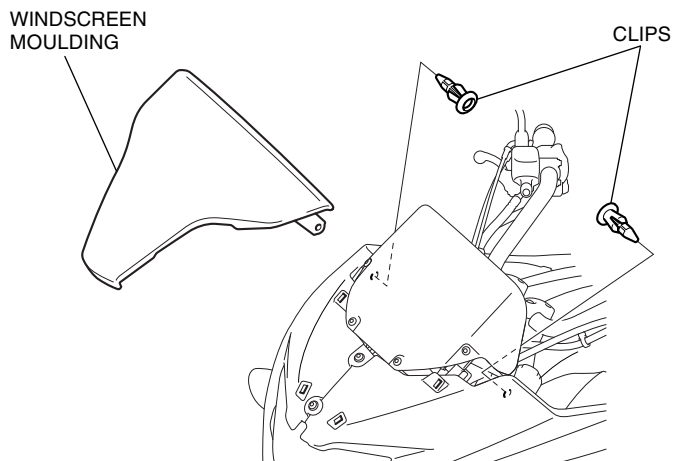
3. Refer to the Service Manual for the motorcycle, remove the rear cowls.
 - Repeat on the right side.



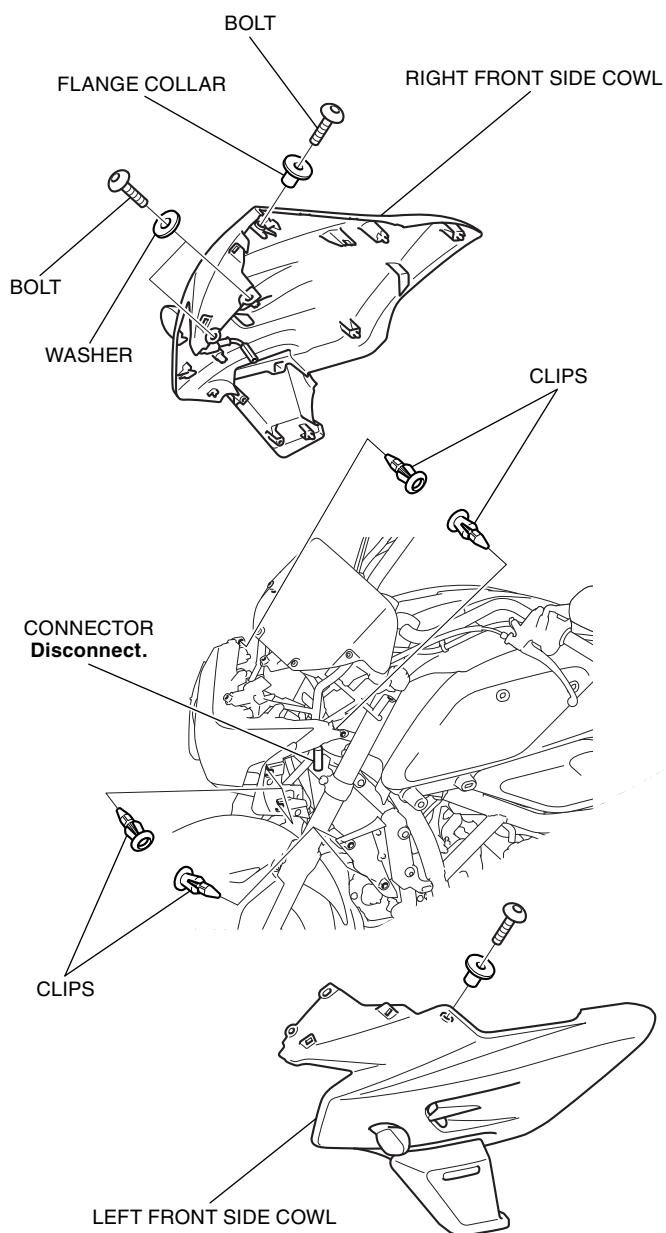
4. Refer to the Service Manual for the motorcycle, remove the inner covers.



5. Refer to the Service Manual for the motorcycle, remove the windscreen moulding.

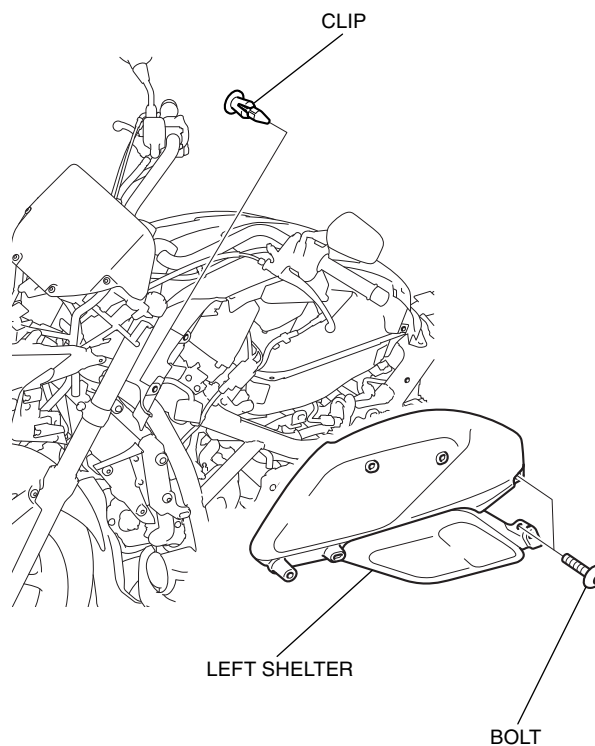


6. Refer to the Service Manual for the motorcycle, remove the front side cowls.

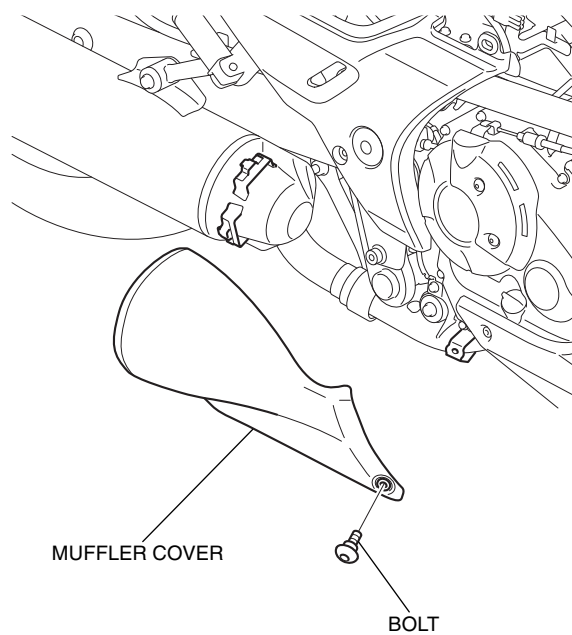


7. Refer to the Service Manual for the motorcycle, remove the shelters.

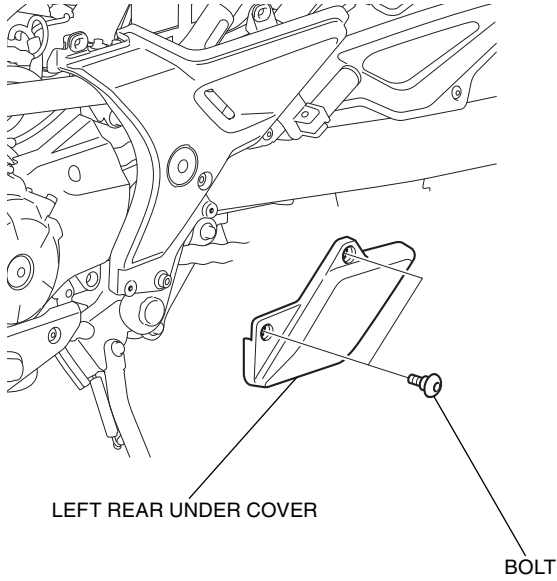
- Repeat on the right side.



8. Refer to the Service Manual for the motorcycle, remove the muffler cover.

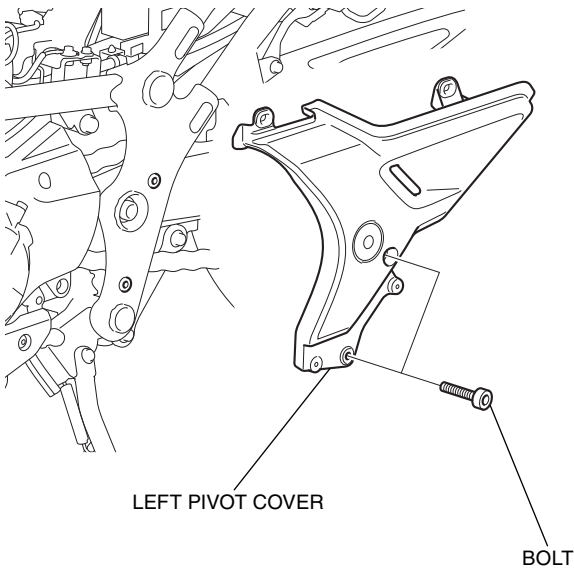


9. Refer to the Service Manual for the motorcycle, remove the left rear under cover.



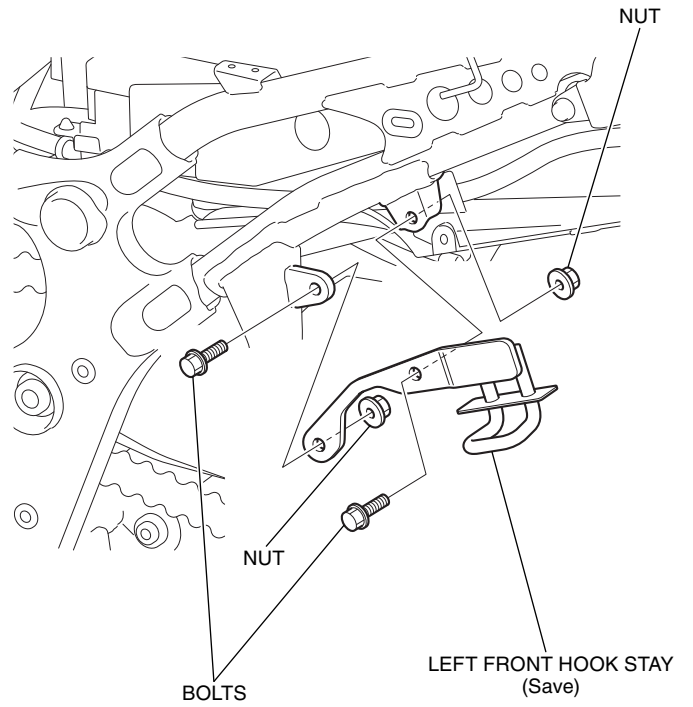
10. Refer to the Service Manual for the motorcycle, remove the pivot covers.

- Repeat on the right side.



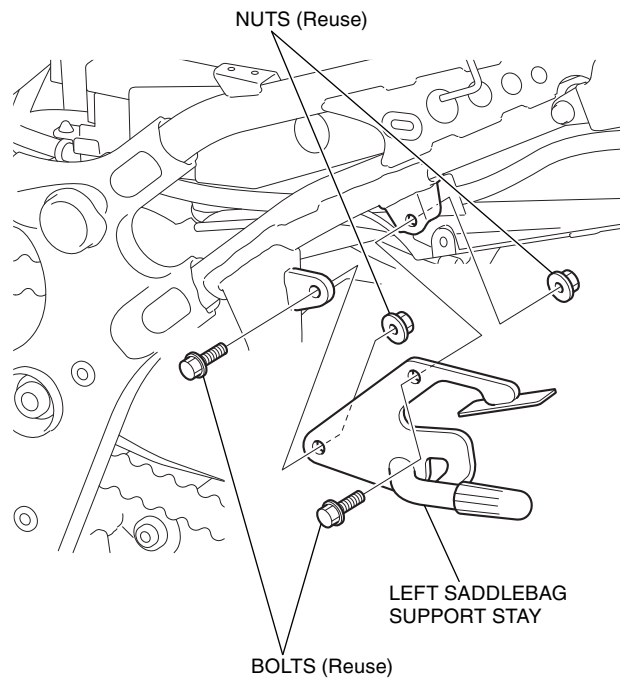
11. Refer to the Service Manual for the motorcycle, remove the front hook stays.

- Repeat on the right side.



12. Install the saddlebag support stays as shown.

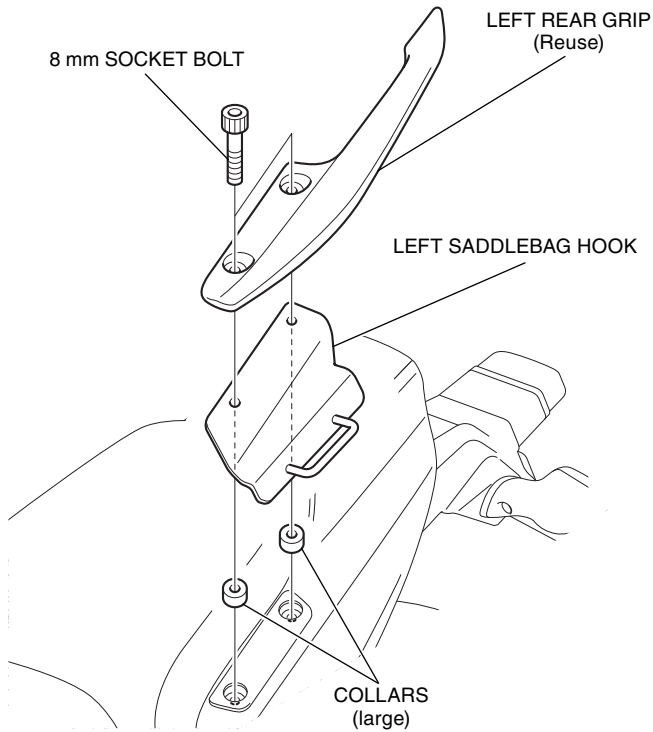
- Repeat on the right side.



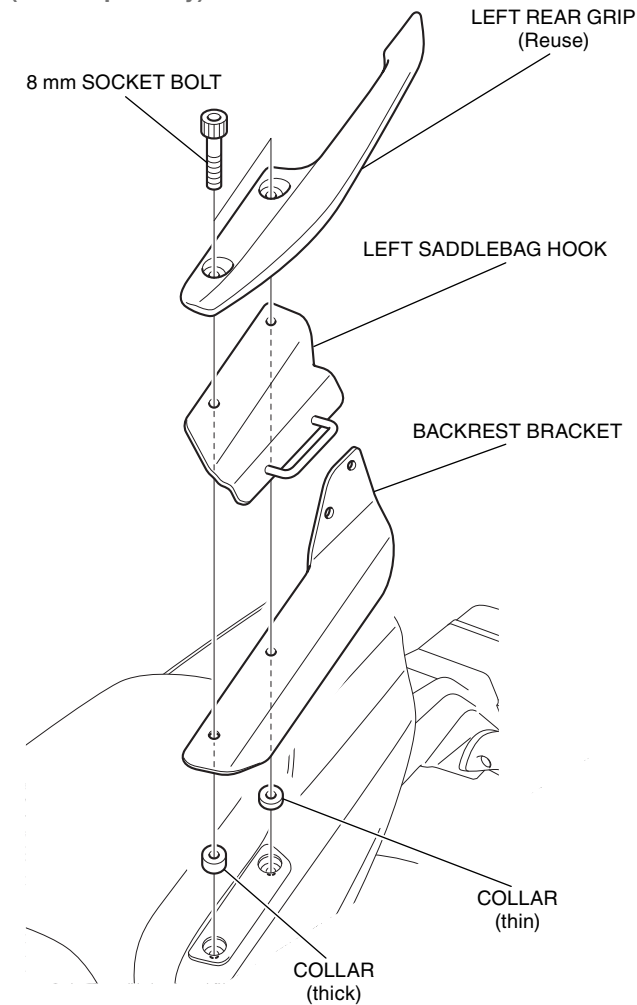
13. Install the rear cowls in the reverse order of removal.

14. Loosely install the saddlebag hooks as shown.

- Repeat on the right side.

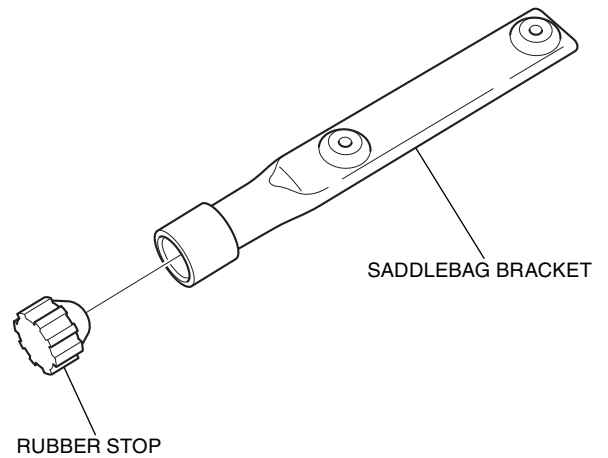
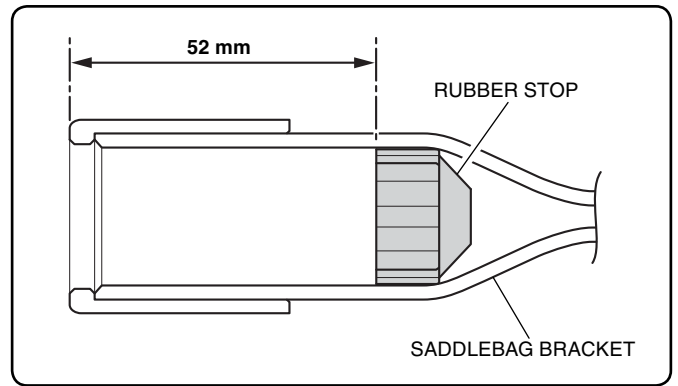


When installing the Backrest bracket (Sold separately)



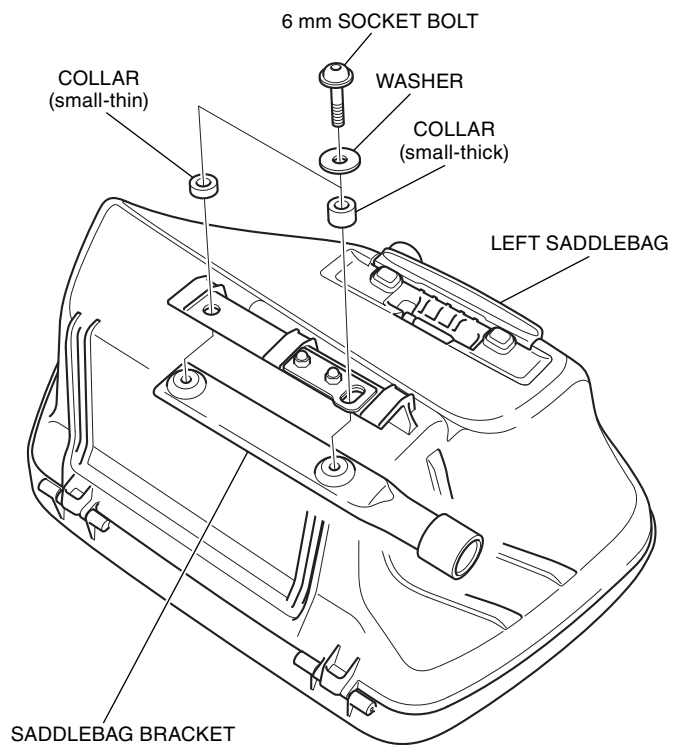
15. Install the rubber stop as shown.

- Make two sets.



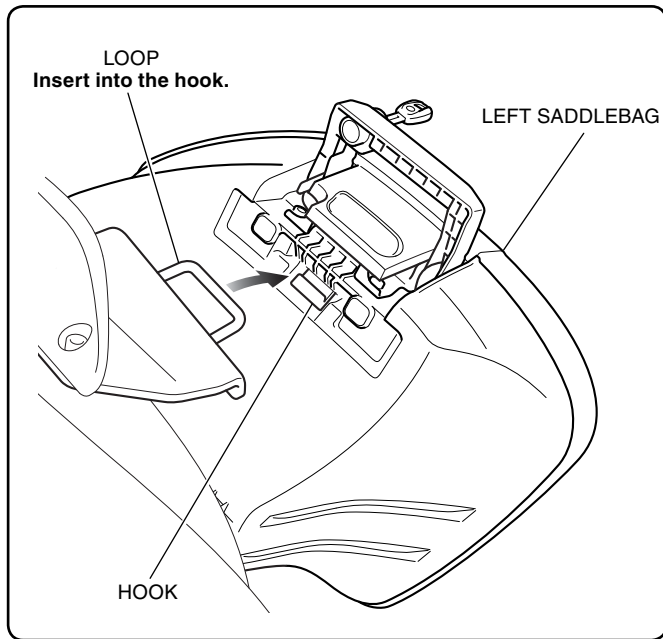
16. Install the saddlebag bracket as shown.

- Repeat on the right side.

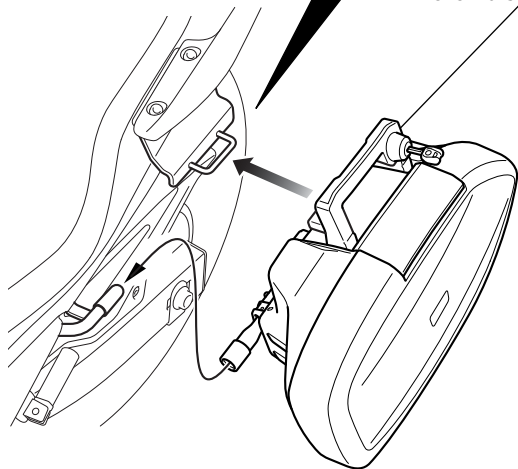


17. Install the saddlebags as shown.

- Repeat on the right side.

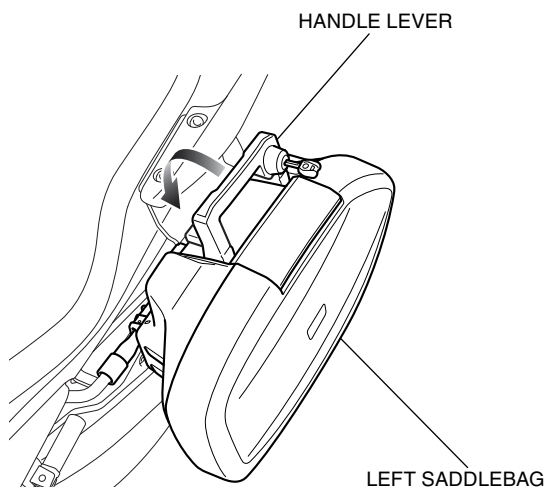


HANDLE LEVER
Install the saddlebag case with the handle lever raised.



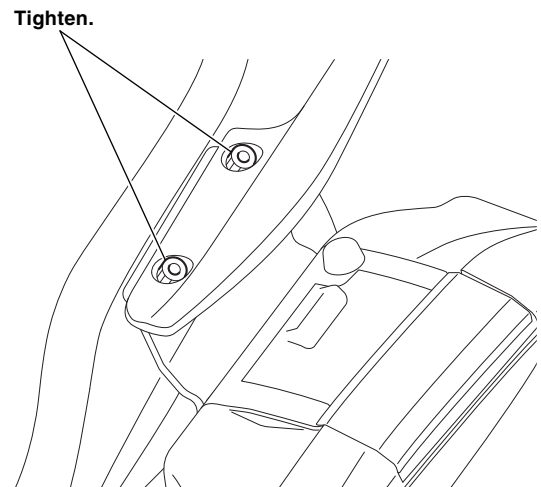
18. Lower the handle lever as shown.

- Repeat on the right side.



19. Tighten all loosely installed hardware to the specifications in the torque chart.

- Left side shown, right side is the same.



20. Install the caps as shown.

- Repeat on the right side.

