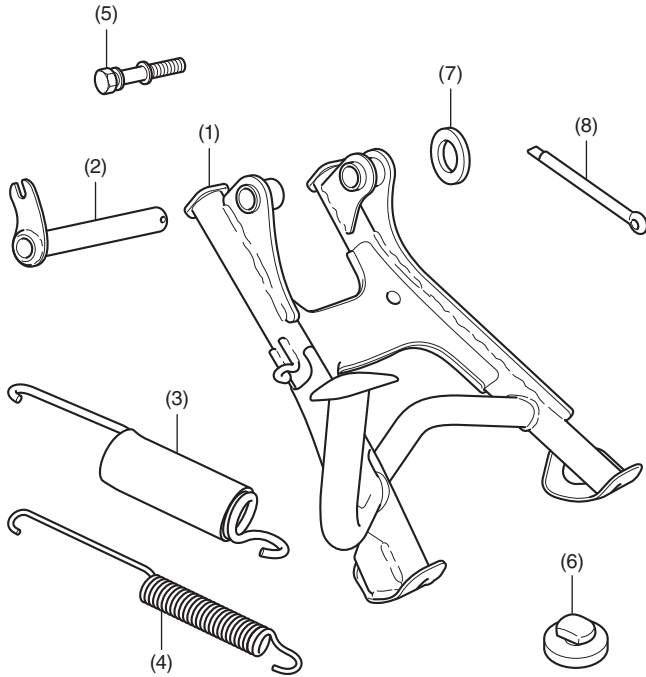


Honda Dealer: Please give a copy of these instructions to your customer.

PARTS LIST



No.	Description	Qty
(1)	Main stand	1
(2)	Shaft	1
(3)	Spring (with rubber)	1
(4)	Spring	1
(5)	Spring hook	1
(6)	Rubber	1
(7)	Washer	2
(8)	Split pin	1

TOOLS AND SUPPLIES REQUIRED

- Socket (14 mm)
- Ratchet
- Spring tool
- Long nose pliers
- Grease
- Synthetic detergent solution
(Water : Synthetic detergent / 100 : 1)
- Shop towel
- Torque wrench

TORQUE CHART

Tighten all screws, bolts, and nuts to their specified torque values. Refer to the Service Manual for the torque values of the removed parts.

Item	N-m	kgf-m	lbf-ft
Spring hook	21.5	2.2	16

INSTALLATION

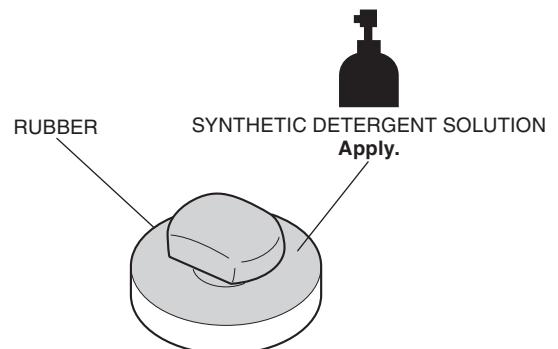
▲ CAUTION

- To prevent burns, allow the engine, exhaust system, radiator, etc., to cool before installing the accessory.

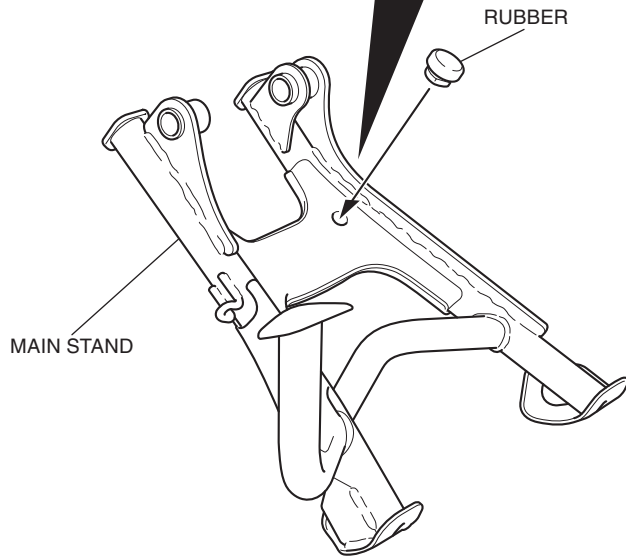
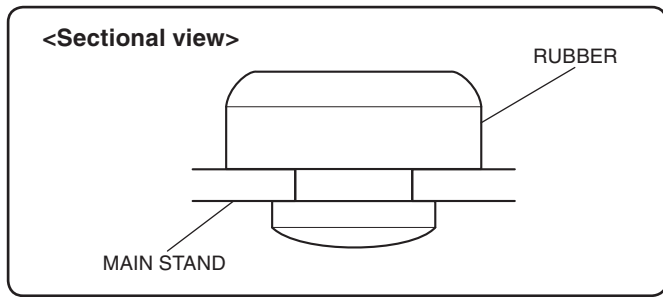
NOTE:

- Be extremely careful when installing the springs as the combined tension of the springs is very strong.
- Keep the motorcycle on its side stand when installing the main stand.
- The spring installation shall be performed by two persons. While one person holds the motorcycle, another person installs the spring.

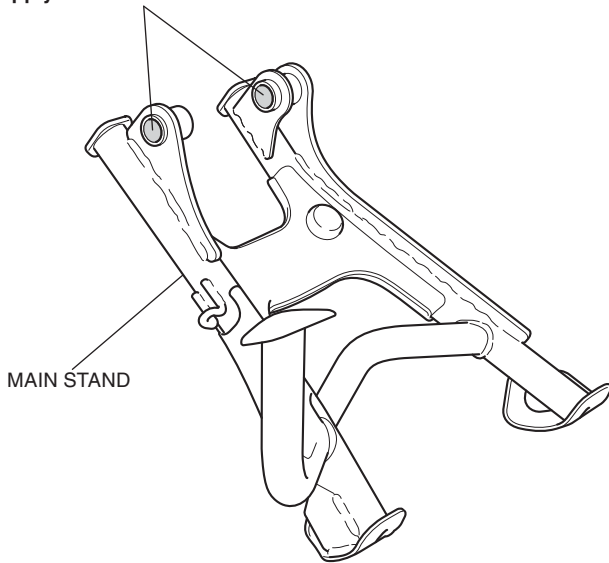
1. Apply synthetic detergent solution to the position shown.



2. Install the rubber in the position shown.

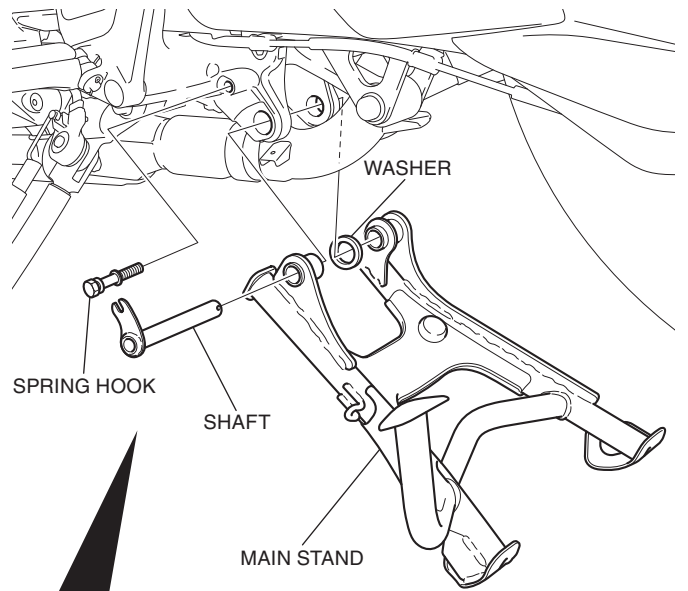


3. Apply grease to the position shown.

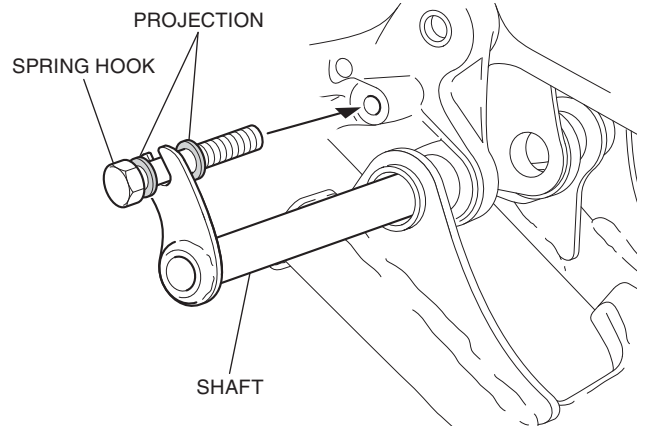


4. Install the main stand as shown.

<Left side>

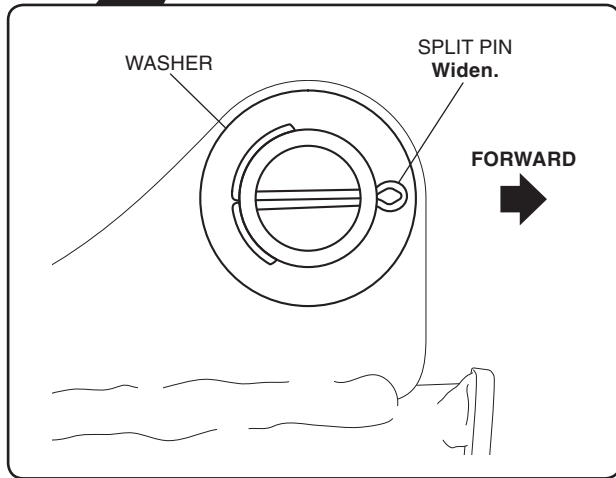
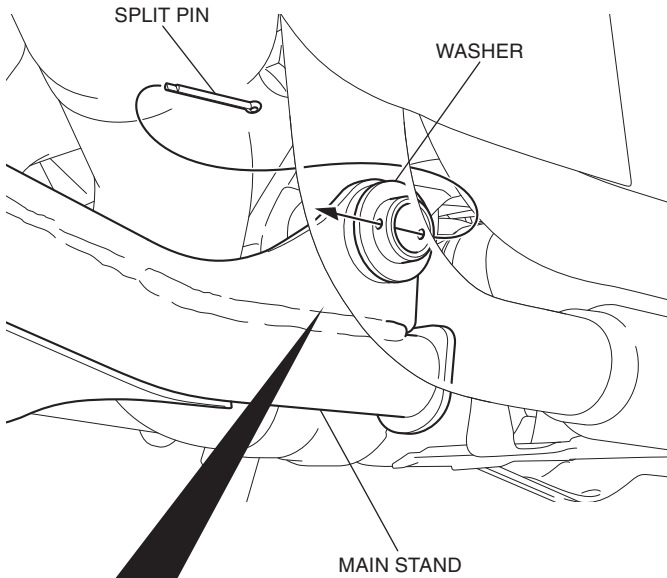


Insert the shaft halfway and tighten the spring hook at the position shown.

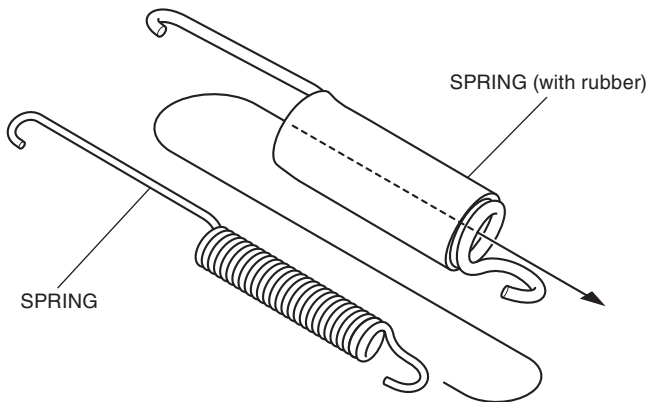


5. Install the washer and split pin as shown.

<Right side>



6. Slide the spring with tube into the spring (with rubber).



7. Install the assembled spring as shown.

- First install the spring on the hook, then install the spring on the main stand.
- The spring installation shall be performed by two persons. While one person holds the motorcycle, another person installs the spring.

