



HONDA

INSTALLATION INSTRUCTIONS

Accessory

BACKREST
P/N 08R70-MJF-A00ZP

Application

CTX700N/ND (Page 2)
CTX700/D (Page 3)

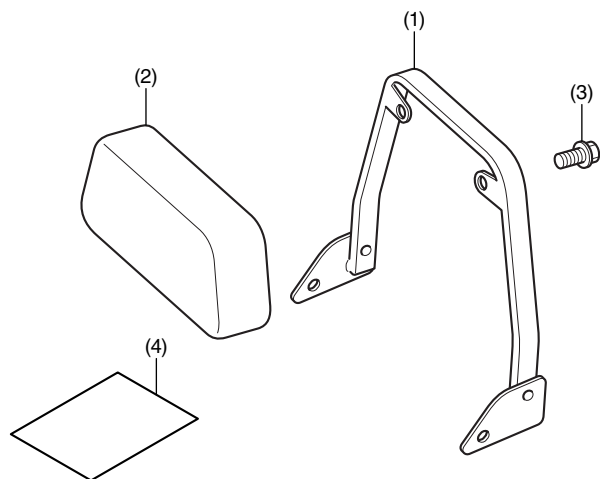
Publication No.

MII 14476

Issue Date

Revised August 2014

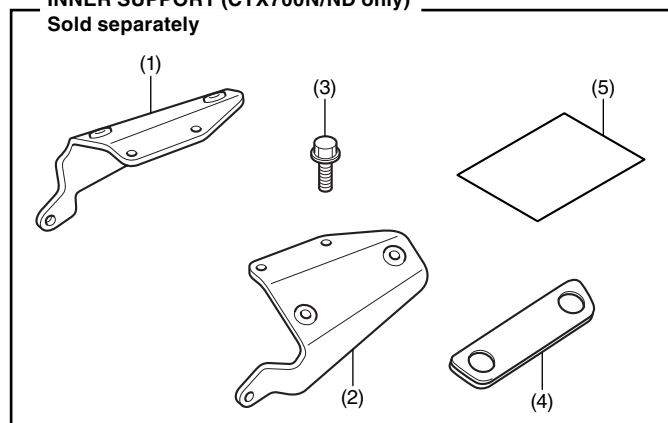
PARTS LIST



No.	Description	Qty
(1)	Backrest bar	1
(2)	Backrest pad	1
(3)	6 mm SH flange bolt	2
(4)	Installation Instruction URL	1

INNER SUPPORT (CTX700N/ND only)

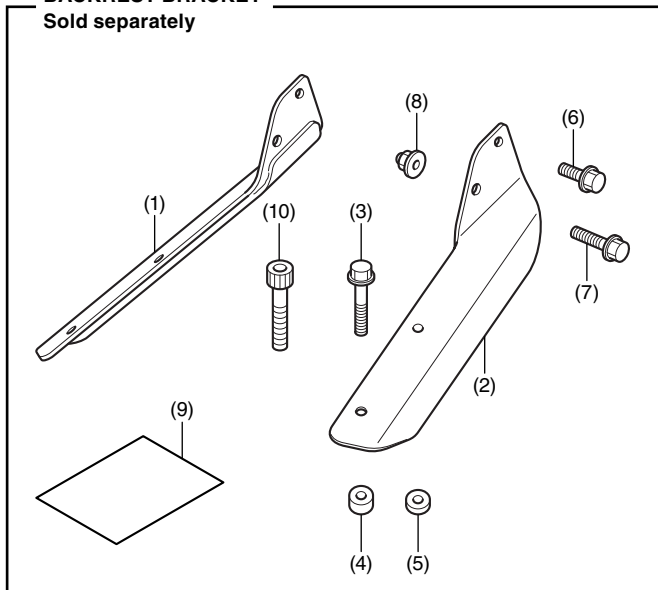
Sold separately



No.	Description	Qty
(1)	Right inner support stay	1
(2)	Left inner support stay	1
(3)	8 mm flange bolt	6
(4)	Cushion	2
(5)	Installation Instruction URL	1

BACKREST BRACKET

Sold separately



No.	Description	Qty
(1)	Right backrest stay	1
(2)	Left backrest stay	1
(3)	8 mm flange bolt (long)	4
(4)	Collar (thick)	2
(5)	Collar (thin)	2
(6)	8 mm flange bolt (short)	4
(7)	8 mm flange bolt (medium)	4
(8)	8 mm flange cap nut	2
(9)	Installation Instruction URL	1
(10)	8 mm socket bolt (Not used.)	4

TOOLS REQUIRED

- Socket (8 and 12 mm)
- Ratchet
- Box-end wrench (12 mm)
- Hex wrench (6 mm)
- Torque wrench

TORQUE CHART

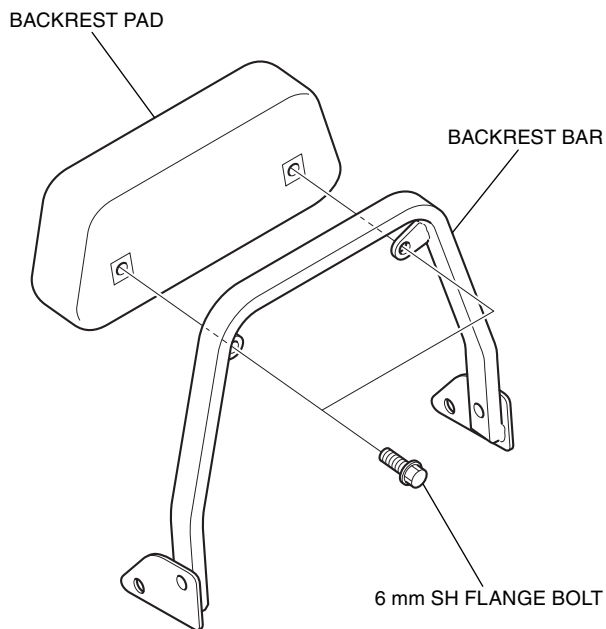
Tighten all screws, bolts, and nuts to their specified torque values. Refer to the Service Manual for the torque values of the removed parts.

Item	N-m	kgf-m	lbf-ft
6 mm SH flange bolt	10	1.0	7

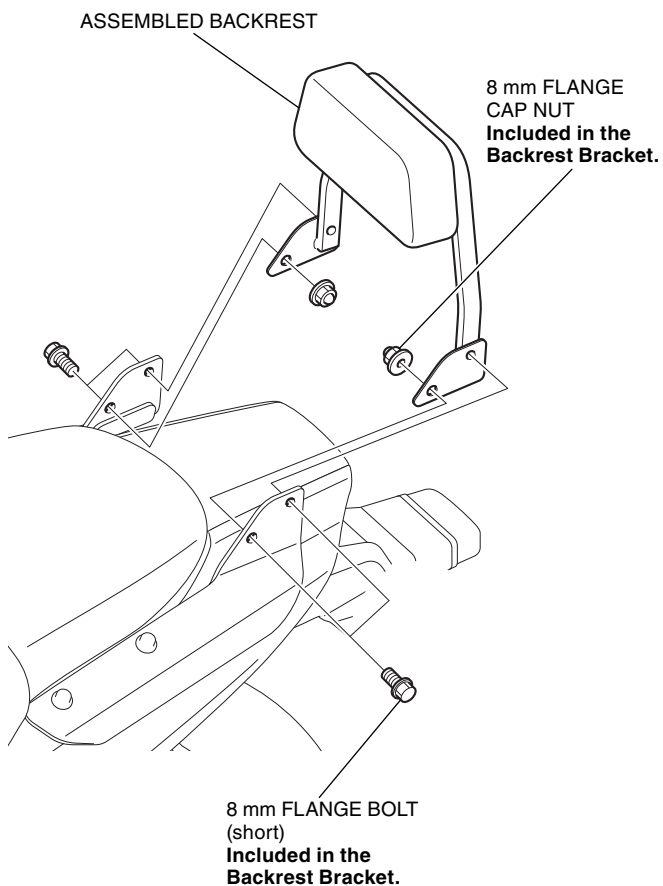
INSTALLATION (CTX700N/ND)

NOTE:

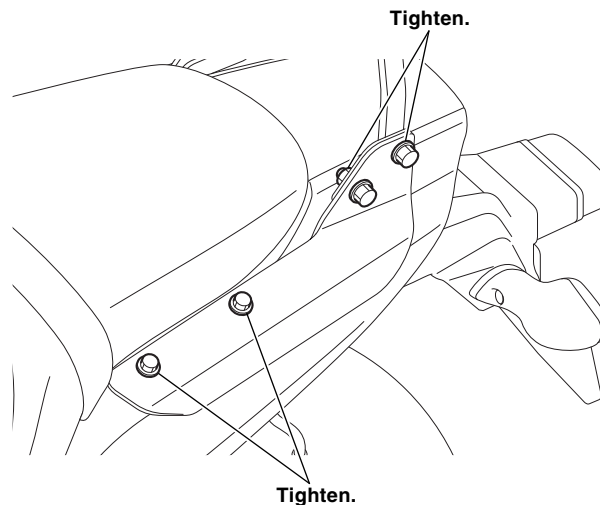
- Take care not to damage the painted surfaces of the motorcycle.
 - **Illustrations show CTX700N type, other type is similar.**
1. Refer to the Installation Instructions for the separately sold backrest bracket, install the backrest bracket to the motorcycle.
 2. Install the pad as shown.



3. Loosely install the assembled backrest as shown.



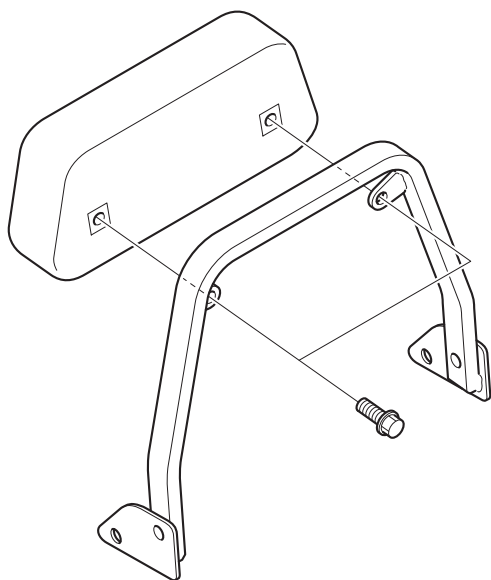
4. Tighten all loosely installed hardware to the specifications in the torque chart.
 - **Left side shown, right side is the same.**



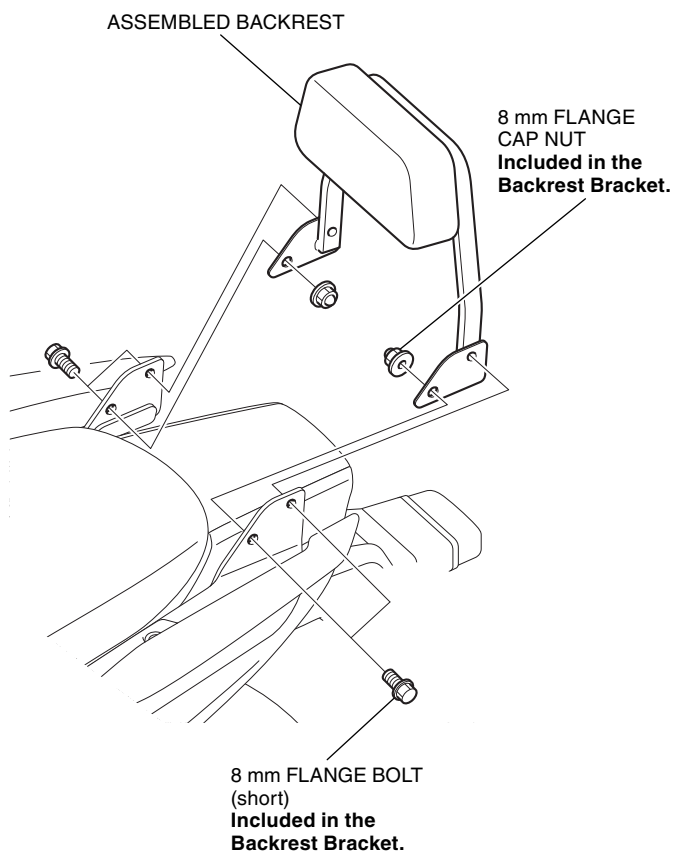
INSTALLATION (CTX700/D)

NOTE:

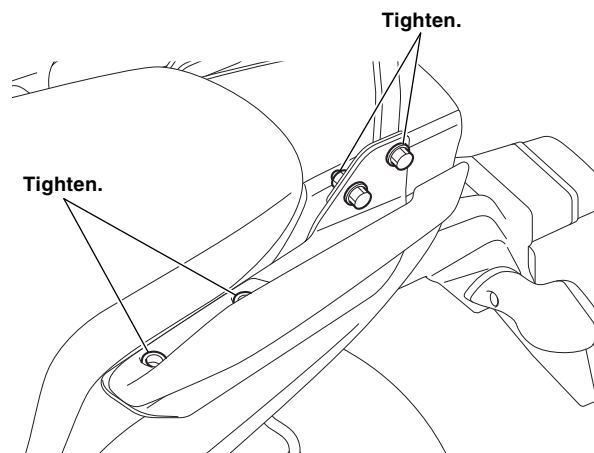
- Take care not to damage the painted surfaces of the motorcycle.
 - **Illustrations show CTX700 type, other type is similar.**
1. Refer to the Installation Instructions for the separately sold backrest bracket, install the backrest bracket on the motorcycle.
 2. Install the pad as shown.



3. Loosely install the assembled backrest as shown.



4. Tighten all loosely installed hardware to the specifications in the torque chart.
 - **Left side shown, right side is the same.**



5. Install the caps as shown.
 - **Repeat on the right side.**

