

HONDA

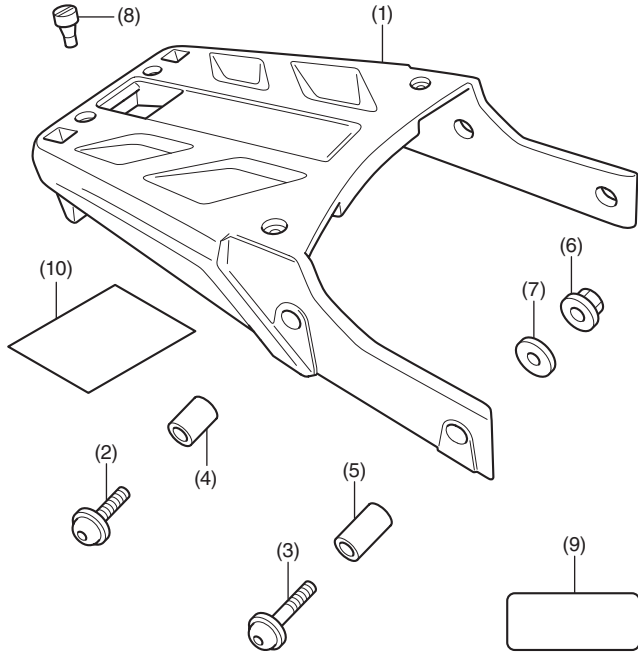
INSTALLATION INSTRUCTIONS

Accessory
REAR CARRIER
P/N 08L70-MJJ-D30

Application
NC700X/XA/XD
NC700S/SA/SD
NC700D

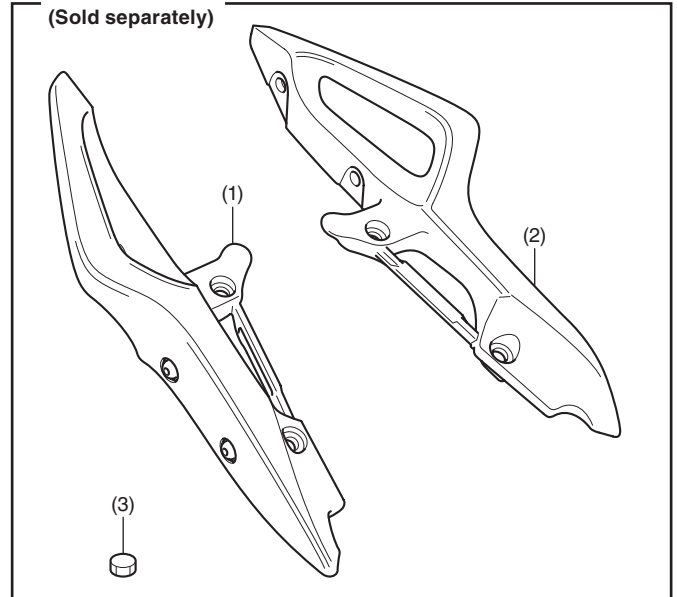
Publication No.
M11
 Issue Date
January 2013

PARTS LIST



No.	Description	Qty
(1)	Rear carrier	1
(2)	8 mm socket bolt (short)	2
(3)	8 mm socket bolt (long)	2
(4)	Collar (short)	2
(5)	Collar (long)	2
(6)	8 mm flange nut	4
(7)	Washer	4
(8)	Rubber	4
(9)	Caution label	1
(10)	URL paper	1

PANNIER STAY (Sold separately)



No.	Description	Qty
(1)	Right pannier stay	1
(2)	Left pannier stay	1
(3)	Plug	4

TOOLS AND SUPPLY REQUIRED

Box-end wrench (12 mm)
 Hex wrench (5 mm)
 Isopropyl alcohol
 Shop towel
 Torque wrench

TORQUE CHART

Tighten all screws, bolts, and nuts to their specified torque values. Refer to the Service Manual for the torque values of the removed parts.

Item	N-m	kgf-m	lbf-ft
8 mm flange nut	27	2.8	20

INSTALLATION INFORMATION

NOTE:

- The Pannier stay which is sold separately is required to install this accessory.
- The Pannier stay is not required for the motorcycle equipped with the Pannier stay.
- Heat the bonding surfaces with a hair dryer if the ambient air temperature is below 70°F (21°C).
- The adhesive reaches full strength in 72 hours. Wait at least 24 hours before riding your motorcycle.
- Take care not to damage the painted surfaces of the motorcycle.
- When the motorcycle is already equipped with the Pannier stay, loosen all mounting bolts before installing this accessory.

CONTENTS

Refer to the following page according to each model.

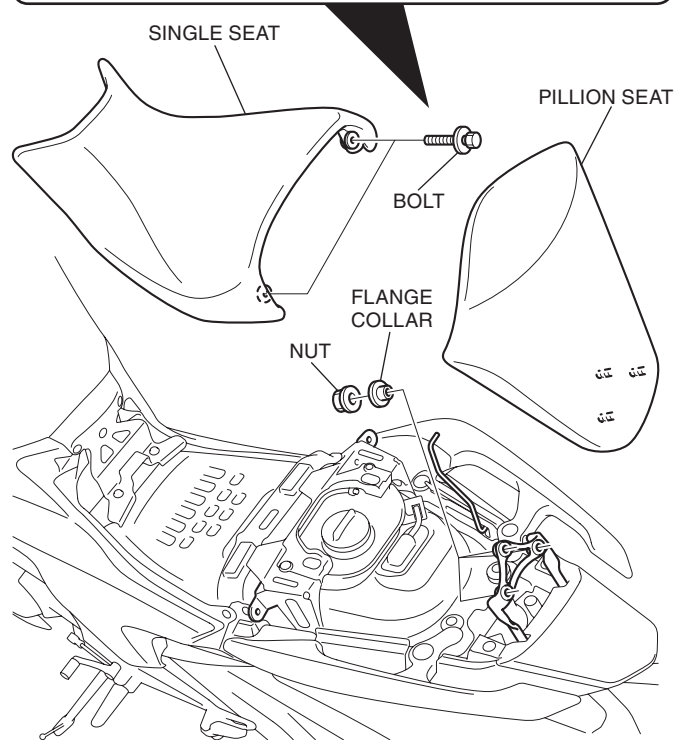
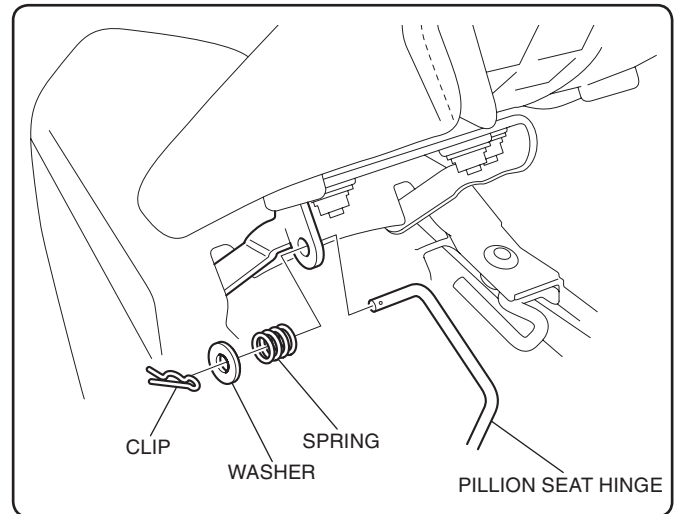
INSTALLATION <NC700X/XA/XD/S/SA/SD>P.2

INSTALLATION <NC700D>P.5

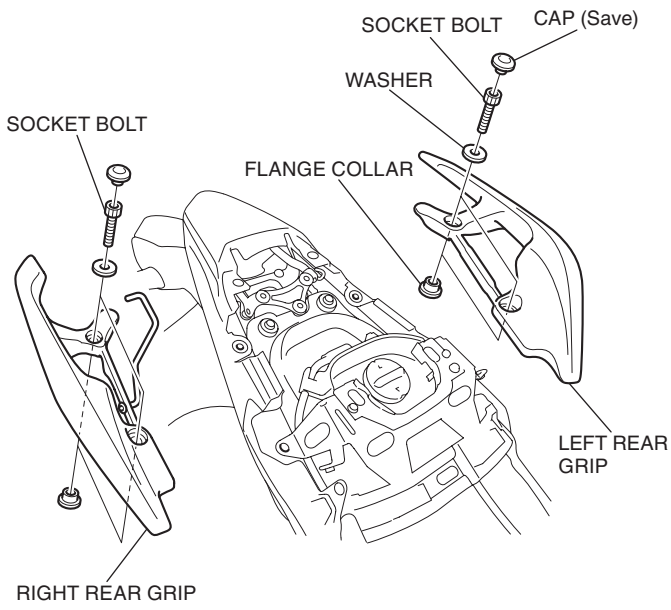
INSTALLATION <NC700X/XA/XD/S/SA/SD>

- Illustration shows NC700XA type, other types are similar.

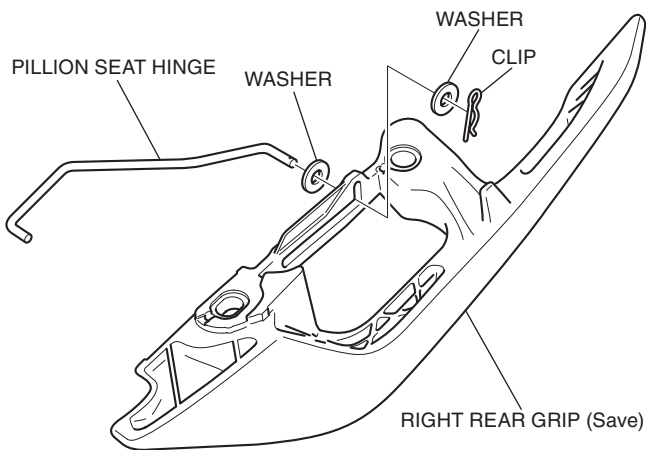
1. Refer to the Service Manual for the motorcycle, remove the motorcycle parts.



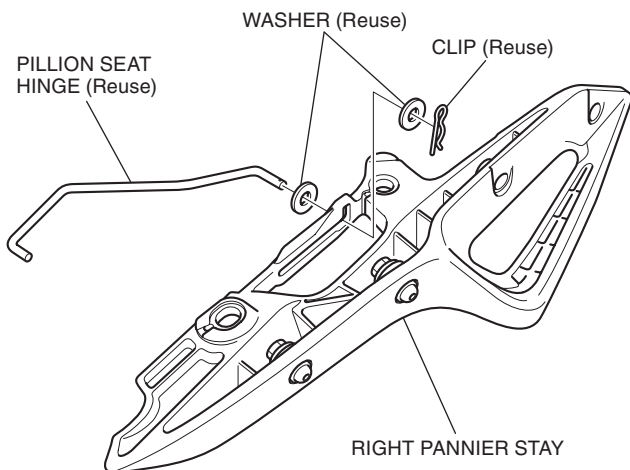
2. Refer to the Service Manual for the motorcycle, remove the motorcycle parts.



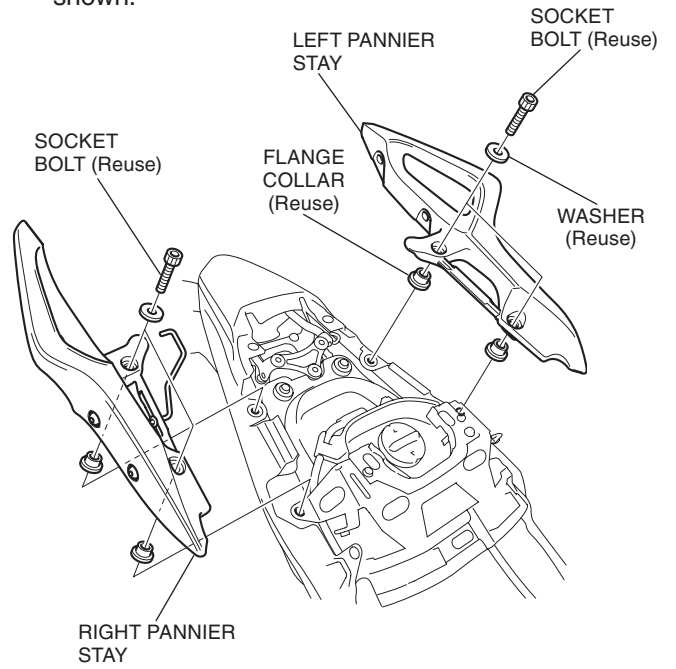
3. Remove the pillion seat hinge as shown.



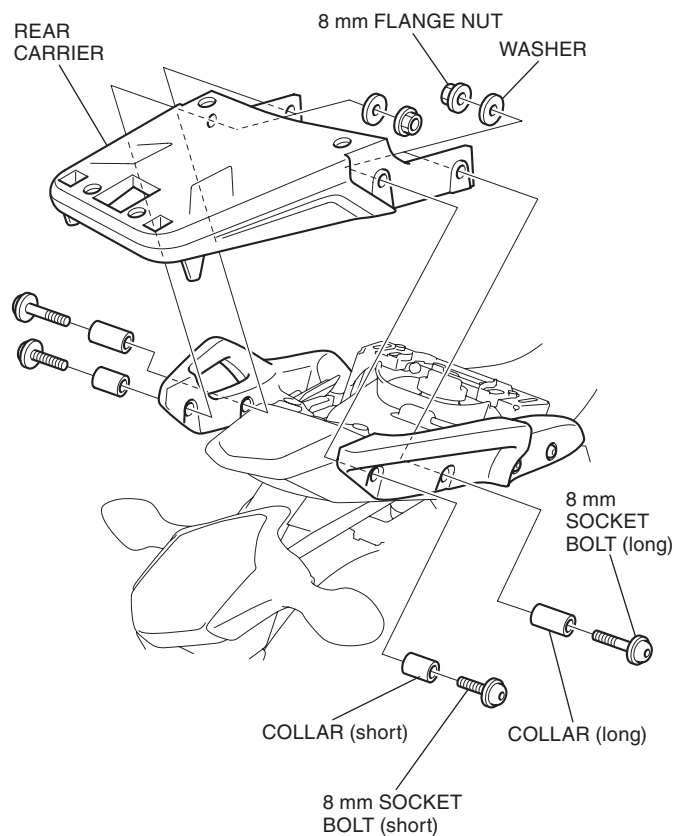
4. Install the pillion seat hinge as shown.



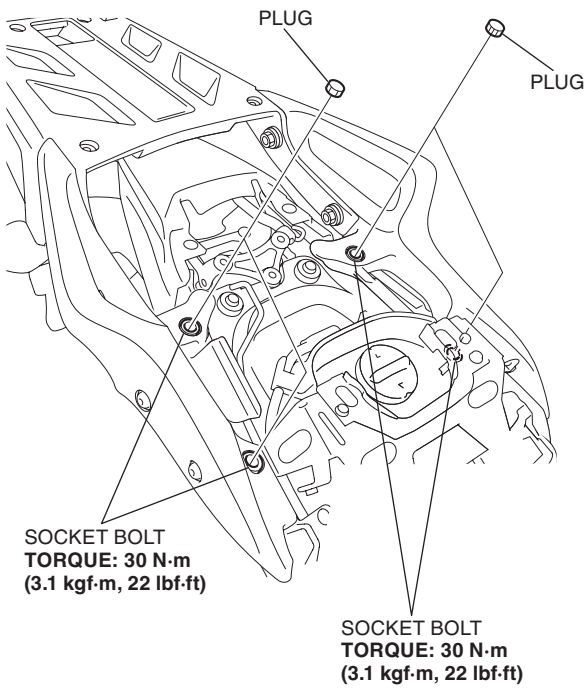
5. Loosely install the right and left pannier stays as shown.



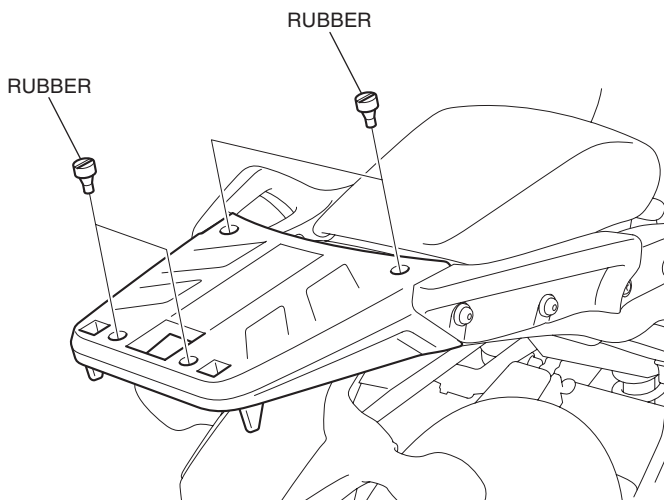
6. Loosely install the rear carrier as shown.



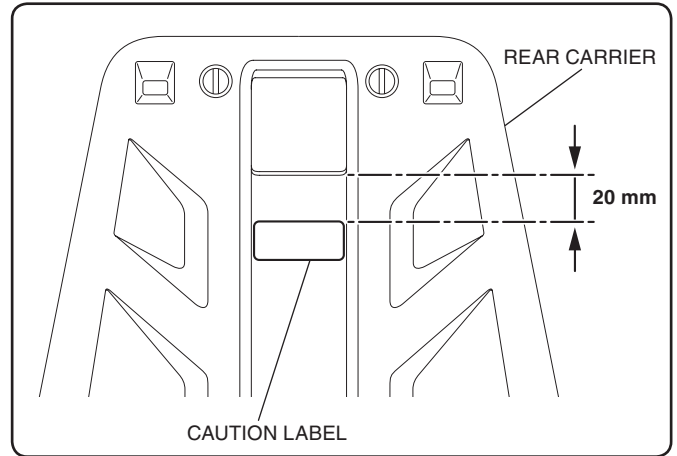
- Tighten all loosely installed hardware to the specifications in the torque chart. Install the plugs as shown.



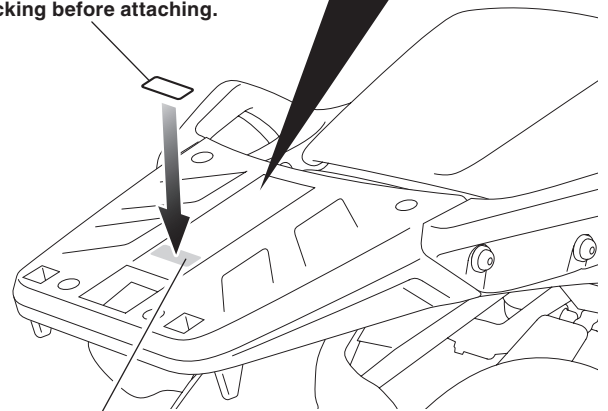
- Install the removed parts in the reverse order of removal.
- Install the rubbers as shown.



- Attach the caution label in the position shown.



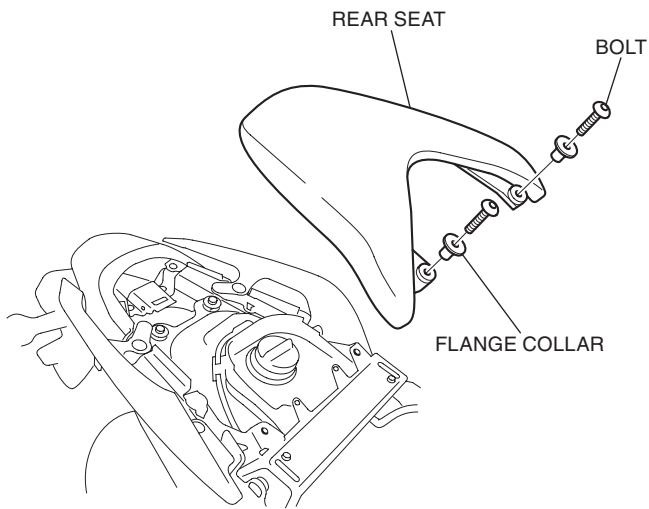
CAUTION LABEL
Remove the adhesive backing before attaching.



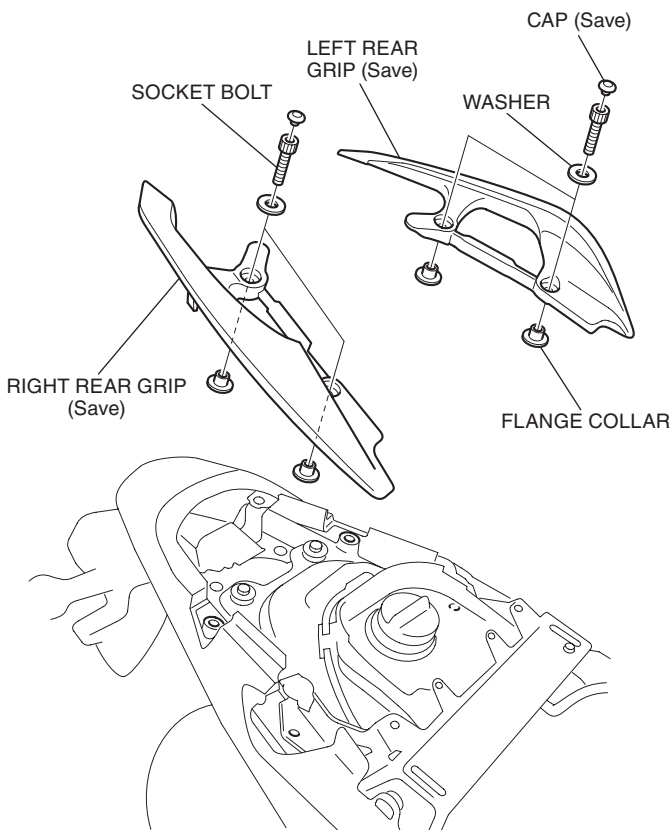
ISOPROPYL ALCOHOL
Thoroughly clean the area where the caution label will be attached.

INSTALLATION <NC700D>

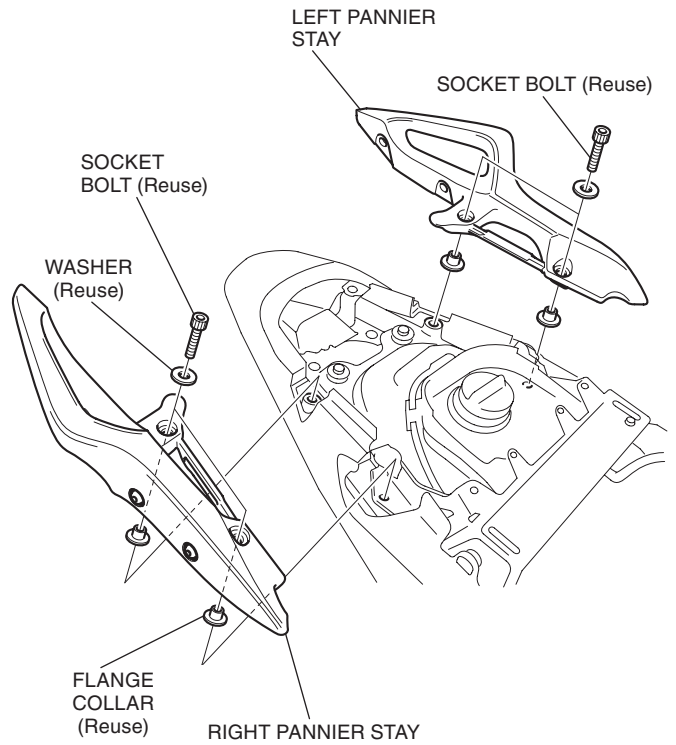
1. Open the seat, remove the rear seat as shown.



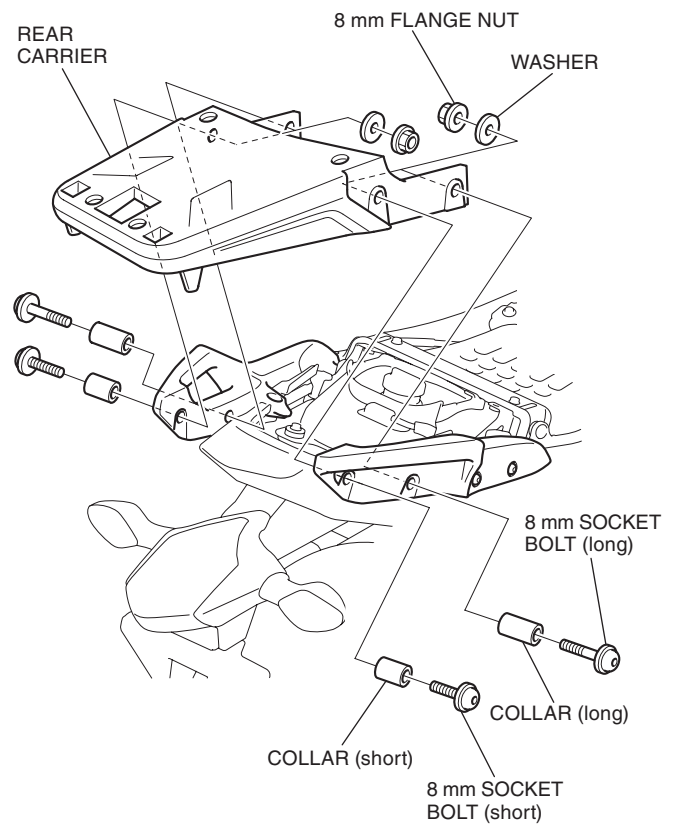
2. Refer to the Service Manual for the motorcycle, remove the motorcycle parts.



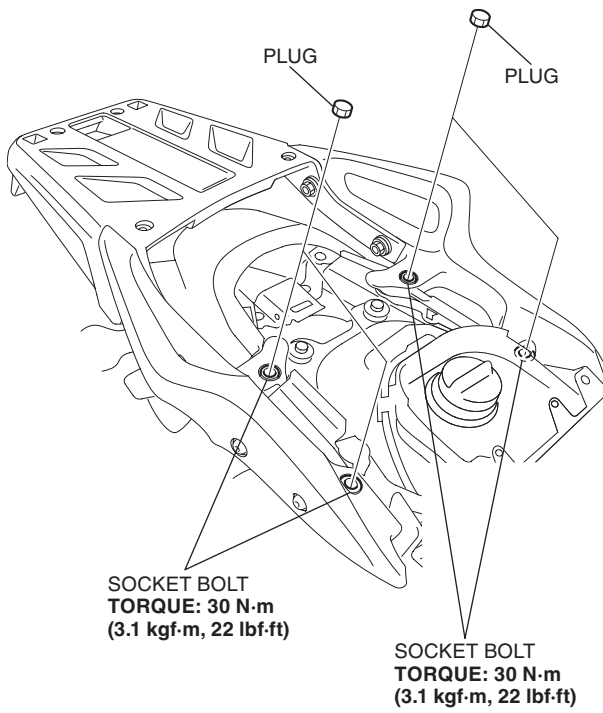
3. Loosely install the right and left pannier stays as shown.



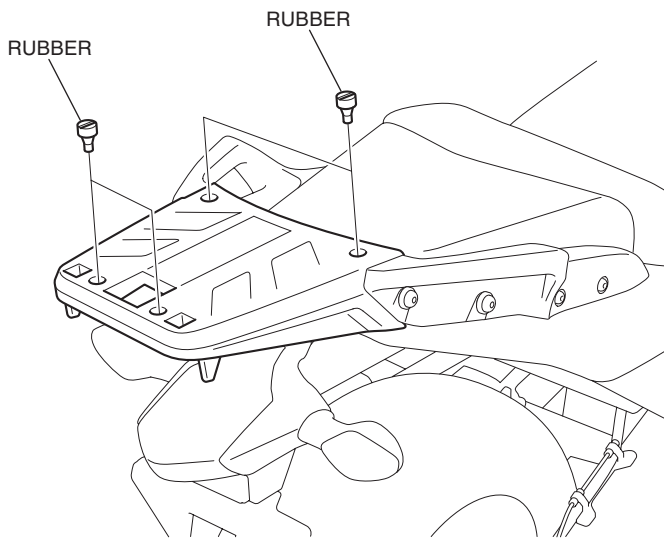
4. Loosely install the rear carrier as shown.



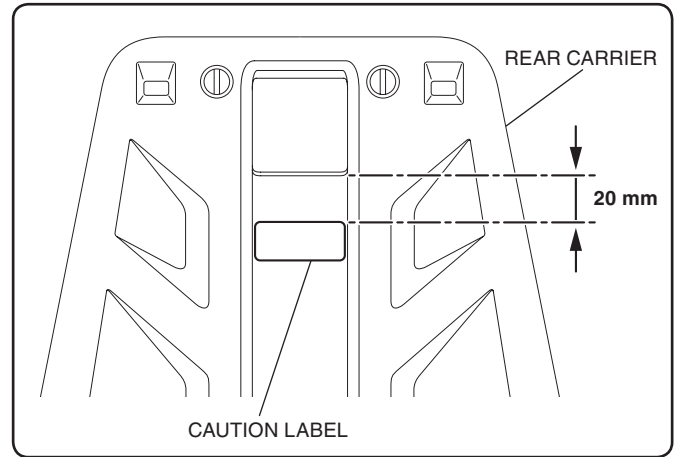
5. Tighten all loosely installed hardware to the specifications in the torque chart. Install the plugs as shown.



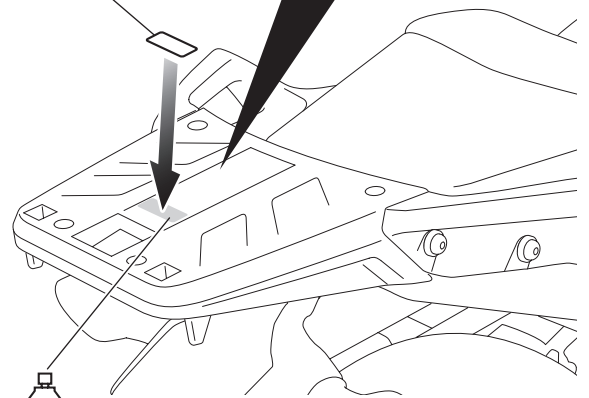
6. Install the removed parts in the reverse order of removal.
7. Install the rubbers as shown.



8. Attach the caution label in the position shown.



CAUTION LABEL
Remove the adhesive backing before attaching.



ISOPROPYL ALCOHOL
Thoroughly clean the area where the caution label will be attached.